




L.BRADOR®

Workwear  
Designed  
to work

12/13





We took the liberty to test the mobility a little extra on our new craftsman's trousers 105PB. So we let street dancer Frederick "Moore" perform a few extra turns and flips. He gave them ten out of ten.



---

## Designed to move. Designed to work.

---

Forgive us if we go on about design. But we believe design is important. It's the difference between a good day at work or the opposite. Sleeve length. The width of a pocket. Zip placement. Small things that are crucial and which you do not notice at all, if we have done our job right. As things just work then, and everything runs smoothly. If we have not done our homework and made sure that things work as they should, we quickly find out in the form of angry e-mails, and irate phone calls. Something we like to avoid. That's why we continue to develop our design work to produce the best, most attractive and functional work clothes on the market. It's our job to facilitate your work and to make sure you feel good every day at work. Designed to work.

# Contents

## Trousers and overalls

9

The development of trousers has taken a giant step forward. This was possible due to a lot of stretch in the trousers!

## Tops

53

The world of fashion has finally caught up with us. Flannel shirts, cheques, and ribbed singlets are at the height of fashion.

## Accessories

87

They always say the details make the big picture. We subscribe to that. Top off your outfit with a stylish hat, or a matching belt!



## Jackets and vests

33

Here you can find comfortable, power stretch jackets to wear as a warm second layer, or stylish shell jackets that keep the wind and water away from the body!

## Under- garments

77

Our thermal undergarments made of wool are unbeatable when it comes to keeping warm. Combine with our new sock collection!

## Article Index

91

Here you find what you are looking for. In alphabetical order, with complete article number series.



## Model overview 100

A brief overview of the products sorted by model name. Simple and clear.



## Size chart 101

One size does not fit all!

If the function is to be optimal, the garments need to sit perfectly.

## Material 102

Read more about what materials suit what function. A quick guide that will give you a better idea of which materials you should choose.

# Our garments layer it

123

One, Two, Three! Dress sensibly, flexibly and smart. With the proven layer-on-layer principle, you can easily regulate your personal temperature based on the weather and work situation. Our clothes are designed to work together with each other to provide unbeatable moisture wicking, warmth and protection from the elements. Each layer has its own function and combined they make you feel good, no matter if it's snow, thunderstorms or drift-ice raging outside. Designed in every detail.



# on.



LAYER 1. Closest to the body is most important of all three. It should not chafe, it must not itch. It should give you the warmth you need, and provide maximum moisture transportation! Everything else is inferior. Closest to your body you should have a temperature of about 35.8 °C, you will then feel at your best, and perform to the maximum. A good base layer, along with a further two smart layers, ensures this!

## 2



LAYER 2. The intermediate layer has two main functions:

It should keep you warm and transport heat and moisture to the outer layer. The intermediate layer can be e.g. wool or polyester. Usually, you only have an intermediate layer on the upper body, as the legs rarely need more than two layers. To keep the body warm and dry is more important.

## 3




LAYER 3. The outer layer also has two functions. One: To keep out the wind, rain, snow and other unpleasantness. Two: To release the extra heat, condensation and body vapour that forms when you graft with perspiration on your brow. No matter how much it rains or blows, you can still work up a sweat. It's then ideal for the outer garment to breathe. Otherwise there will be a rampant sauna inside your clothes!

It's a question of thinking in new ways and not brush aside any ideas before we tested them in real life.







Product development is basically thinking outside the box. To attack a problem, with an open mind and equal parts enthusiasm, madness and knowledge. We do not worry too much about what our competitors do. We would rather look towards the sports and outdoor industry, which has come further than our own industry when it comes to functional clothing. It's about knowing how those who wear our clothes work. How you carry, lift, stand, walk and stretch.

One example of the way we think is our new trousers that permit maximum mobility. It stands to reason really. Reinforced where they wear, stretch where they need to. The result is a pair of trousers that fit perfectly in any position and which are both comfortable and flexible. In addition, the stretch means that the trousers have an attractive silhouette and we minimise the risk of the trousers' crotch ripping. We stretch ourselves a little extra when we present 105PB.

## Trousers and overalls

# 9

The development of trousers has taken a giant step forward. This was possible due to a lot of stretch in the trousers!



# New! Work trousers with stretch



## Trousers 105PB

Heavy-duty half-Panama weave in polyester/cotton for best hardwearing surface. Stretch material over the rear, front, crotch and front and rear sides of the knee for extremely good flexibility,

comfort and airiness. The stretch material and a tighter fit create a closer-fitting trouser with knee-pads that remain in the right position. Reinforced knee-pad pockets in stretch kevlar

for good flexibility and durability.

Sizes: C44-C60, D96-D104.

Material and weight: 65% polyester, 35% cotton. 325 g/m<sup>2</sup>.

Here are just a few of the benefits and improvements we have made to our new work trousers 105PB. We cannot show you the most important here. It's actual feeling when you wear them. Try them yourself.

Heavy-duty half-Panama weave in polyester/cotton for an excellent hard-wearing surface.

The stretch material and a tighter fit create a closer-fitting trouser with knee-pads that remain in the right position.

Reinforced knee-pad pockets in stretch kevlar for good flexibility and durability.

Stretch material over the rear, front, crotch and the front and back of the knee for extremely good flexibility, comfort and airiness.

Reinforced hanging pockets and leg pockets.

Pre-formed knees for better fit and flexibility.

**Pockets and holders**  
Two hanging pockets, two front pockets and two tool holders in the waistband. Inset rectangular patch pockets at the rear to avoid compromising the functionality of the stretch material. Knee-pad pockets in two heights, folding rule pocket, leg pocket with zip and inner telephone pocket. ID card holder on the right-hand hanging pocket.





### Trousers 101B

Classic model in heavy-weight cotton for best durability. Hanging pockets, rear leg ends and knees reinforced with

Cordura. Concealed ID-card pocket.

Sizes: C44-C60, C146-C156, D96-D116, Womens 36-44.  
Material and weight: 100% cotton. 375 g/m².



# Dry trousers at last!



Trousers 115B

100% cotton with EPIC-technology giving a water-repellent trouser with good breathability and a comfortable feel. No coating, but an environmentally-friendly ultra-thin polymer that is

wound around the cotton fibre. The water repellent function lasts for the life of the trouser. Hanging pockets, rear leg end and knees reinforced with Cordura. Inside knee protection pad pockets

at two levels.

Sizes: C44-C60, C146-C156, D96-D116.

Material and weight: 100% cotton. 350 g/m<sup>2</sup>.

# Contrast stitching, patterned or basic. What would you choose?



## Trousers 161PB

Classic model in heavy-weight cotton/polyester for best durability. Hanging pockets, rear leg ends and knees reinforced

with Cordura. ID-card pocket on left leg. Sizes: C44-C60, C146-C156, D96-D116, Womens 36-44.

Material and weight: 65% polyester, 35% cotton. 320 g/m<sup>2</sup>.



### Trousers 164B

Chino model with rear pockets and the 'right' details. Close-fitting legs. Lightweight, versatile

cotton for a cool feel. Removable hanging pockets with velcro fastenings. Extendable legs by 5 cm.

Sizes: C44-C60. Khaki to C64. Material and weight: 100% cotton. 245 g/m².



### Trousers 103B

Classic model in cotton.  
Extendable legs by 5 cm.  
ID-card pocket.

Sizes: C44-C60.

Material and weight:  
100% cotton. 285 g/m<sup>2</sup>.



### Trousers 171PB

Canvas weave in polyester/cotton for the best wear protection. Brushed inside for a comfortable feel. Rear leg ends reinforced with Cordura.

Matches jacket 172PB.  
ID-card pocket on left leg.

Sizes: C44-C60,  
C146-C156, D96-D116,  
Womens 36-44.  
Material and weight:  
65% polyester, 35% cotton. 300 g/m<sup>2</sup>.



# Industrial trousers with elegant details, the right fit and style!



## Trousers 162PB

Heavyweight cotton/polyester for best durability. Rear leg endings and knees reinforced with Cordura. Conceale ID-

card pocket on left leg.  
Sizes: C44-C60, C146-C156, D96-D116, Womens 36-44.

Material and weight: 65% polyester, 35% cotton. 320 g/m².



### Trousers 151B

Classic model in heavy-weight cotton. Matches the structure and colour of jacket 202B.

ID-card pocket.  
Sizes: C44-C60,  
C146-C156, D96-D116,  
Womens 36-44.

Material and weight:  
100% cotton. 375 g/m<sup>2</sup>.



### Trousers 151PB

Classic model in polyester/cotton. Matches the structure and colour of jacket 252PB.

Sizes: C44-C60, C148-  
C156, D96-D116,  
Womens 36-44.

Material and weight:  
65% Polyester, 35% cotton.  
260 g/m<sup>2</sup>.



### Trousers 106PB

In lightweight polyester/cotton for a cool feel. Pre-formed knees for a better fit and flexibility. Extendable legs by 5 cm.

Designed for environments with scratch-sensitive surfaces. ID-card pocket.

Sizes: C46-C60.

Material and weight:  
65% polyester, 35% cotton.  
210 g/m<sup>2</sup>.



### Trousers 158PB

Classic model in light-weight polyester/cotton for a cool feel. Matches the structure and colour

of jacket 205PB. ID-card pocket and knee pad pockets.

Sizes: C44-C60. Material and weight: 65% polyester, 35% cotton. 245 g/m<sup>2</sup>.



### Trouser 150PB

Classic model in polyester/cotton. Matches the structure and colour of jacket 205PB. ID-card pocket.

Sizes: C44-C60, C148-C156, D96-D116, Womens 36-44.

Material and weight: 65% polyester, 35% cotton. 260 g/m<sup>2</sup>.



### Flame Retardant Trousers 302FR

Fire retardant treated cotton. Matches the structure and colour of jacket 322FR. ID-card pocket.

Sizes: C44-C68. Material and weight: 100% cotton. Reflective material around the legs. 350 g/m<sup>2</sup>.

Certified to: EN 531, class A, B1, C1.



**Pirate Trousers 121B**

Classic model in heavyweight cotton for best durability. Hanging pockets and knees reinforced with Cordura. Concealed ID-card pocket.

Sizes: 44-60, Womens 36-44.

Material and weight: 100% cotton. 375g/m².



**Pirate Trousers 141PB**

Classic model in heavyweight cotton/polyester for best durability. Hanging pockets and knees reinforced with Cordura. ID-card pocket on the left leg.

Sizes: 44-60.

Material and weight: 65% polyester, 35% cotton. 320 g/m².

# Summer is short. Trousers too!



**Pirate Trousers 142PB**

Cotton/polyester for best durability. ID-card pocket on the left leg.

Sizes: 44-60.

Material and weight: 65% polyester, 35% cotton. 310 g/m².



**Pirate Trousers 143PB**

Classic model in cotton/polyester for best durability. Hanging pockets and knees reinforced with Cordura. ID-card pocket on the left leg.

Sizes: 44-60, Womens 36-44.

Material and weight: 65% polyester, 35% cotton. 310 g/m².





### Pirate Trousers 148B

Chino model with rear pockets and the 'right' details. Narrow-fitting legs. Lightweight and versatile cotton for a cool feel. Removeable hanging pockets with

velcro fastening.

Sizes: 44-60.

Material and weight: 100% cotton. 245 g/m².



### Shorts 113B

Chino model with rear pockets and the 'right' details. Narrow fitting legs. Lightweight and versatile

cotton for a cool feel. Removeable hanging pockets with velcro fastening.

Sizes: 44-60.

Material and weight: 100% cotton. 245 g/m².



### Shorts 107B

Longer leg length with the possibility to roll them up. Denim with classic colouring and distressing. Print on the right leg. Removeable hanging pockets with velcro fastenings.

Sizes: 44-60.

Material and weight: 100% cotton. 150 g/m².



### Shorts 111B

Classic model in heavyweight cotton for best durability. Hanging pockets reinforced with Cordura. Concealed ID-card pocket.

Sizes: 44-60.

Material and weight: 100% cotton. 375 g/m².



### Dungarees 181B

Classic model in heavyweight cotton for best durability. Hanging pockets, rear leg ends and knees reinforced with Cordura.

Concealed ID-card pocket. Sizes: 46/48-62/64. Material and weight: 100% cotton. 375 g/m<sup>2</sup>.



### Overall 191B

Classic model. Metal buttons under placket. Outer kneed pad pockets.

Sizes: 46-62.

Material and weight: 100% cotton. 300 g/m<sup>2</sup>.



### Overall 195B

Classic model in heavyweight cotton for best wear surfaces. Metal buttons under placket. Inner knee pad pockets at two heights. Concealed ID-card pocket.

Sizes: 46-62.

Material and weight: 100% cotton. 375 g/m<sup>2</sup>.



### Overall 192PB

Classic model in in lightweight polyester/cotton. Front flap protects the two-way zipa against wear-and-tear. Outer knee pad pockets.

Sizes: 44-62.

Material and weight: 65% polyester, 35% cotton. 245 g/m<sup>2</sup>.



### Rain Overall 990PU

Watertight with sewn and welded seams. Front placket protects the zip against wear-and-tear and offers good wind protection.

Sizes: XS-XXXL.

Material and weight: 55% polyester, 45% PU. 170 g/m<sup>2</sup>.  
Certified in accordance with: EN 343.



### Flame Retardant Overall 332FR

Fire retardant cotton. Concealed ID-card pocket. Inner knee pad pockets.  
Sizes: 44-68.

Material and weight: 100% cotton. 350 g/m<sup>2</sup>.  
Certified to: EN 531, class A, B1, C1.



### Overall 531P

Warm-lined. Wind and watertight with taped seams. Good breathability. Underarm ventilation. Full length zip on the outside of the leg up to the waist.

Snow protection on the inside of the legs.

Sizes: XS-XXXXL.  
Material: 100% polyester.



### Hi-Vis Overall 194P

Warm-lined. Rain and water-proof with taped seams. Good breathability. Underarm ventilation. Full-length zip on the outside of the leg up to the waist.



Sizes: XS-XXXL.

Material: 100% polyester. Warm-lined with quilting. 3M-reflective material.  
Certified to: EN 471, class 3.





### Hi-Vis Trousers 124B

Heavyweight cotton for best wear resistance. Hi-vis material in cotton, making the garment suitable for hot work, for example angle-grinding. Hanging pockets, knees

and rear leg ends reinforced with Cordura. Concealed ID-card pockets.

Sizes: C44-C60, D96-D116, Women 36-44.

Material and weight: 100% cotton. 3M-reflective material. 375 g/m<sup>2</sup>.

Certified to: EN 471, class 1.



### Hi-Vis Trousers 138PB

Water and dirt repellent. The weaves structure makes for a resilient garment. Hanging pockets and knees reinforced with Cordura. Matches the structure and colour of jacket 237PB. Concealed ID-card pocket.

Sizes: C44-C60, C146-C156, D96-D116. Material and weight: 80% polyester, 20% cotton. 3M-reflective material. 310 g/m<sup>2</sup>. Certified in accordance with: EN 471, class 2.



### Byxa 137PB

Water and dirt repellent. Weave's structure makes for a resilient garment. Knees reinforced with Cordura. Matches structure and colour with jacket 237PB. ID-card pocket.

Sizes: C44-C60, C146-C156, D96-D116. Material and weight: 80% polyester, 20% cotton. 3M-reflective material. 310 g/m<sup>2</sup>. Certified to: EN 471, class 2.



### Hi-Vis Trousers 130PB

Hanging pockets and knees reinforced with Cordura. Structure and colour match jacket 230PB. Concealed ID card pocket.

Sizes: C44-C60, C146-C156, D96-D116.

Material and weight: 60% polyester, 40% cotton. 3M-reflective material. 290 g/m².

Certified to: EN 471, class 1.



### Hi-Vis Trousers 136PB

Traditional model, suitable for transport, stores and logistics. Double leg pockets.

Sizes: C44-C60, C146-C156, D96-D116, Womens 36-44.

Material and weight: 60% polyester, 40% cotton. 3M-reflective material. 290 g/m².

Certified to: EN 471, class 1.



### Hi-Vis Pirate Trousers 112PB

Water and dirt repellent. The structure of the weave makes for a durable garment. Hanging pockets and knee protection pad pockets reinforced with Cordura. Concealed ID-card pocket.

Sizes: 44-64.

Material and weight: 80% polyester, 20% cotton. 3M-reflex. 310 g/m².

Certified to: EN 471, class 2.



### Hi-Vis Shorts 122PB

Water and dirt repellent. The structure of the weave makes for a durable garment. Hanging pockets reinforced with Cordura. Concealed ID-card pocket.

Sizes: 44-64.

Material and weight: 80% polyester, 20% cotton. 3M-reflector. 310 g/m².

Certified to: EN 471, class 1.





### Hi-Vis Shell Trousers 931P

Water and windtight with taped seams. Good breathability. Three-layer textile giving versatile trousers with a high degree of comfort. The reflective material is flexible, gives a degree of

stretch and good breathability and has a longer life as they are more resilient to wear-and-tear in the wash. Zips for easy access to the working trouser's side pockets and hanging pockets.

Sizes: XS-XXXL.

Material and weight: 100% polyester. 3M Scotchlite-reflex. 170 g/m². Certified to: EN 471, class 2.



### Hi-Vis Trousers 177P

Water and windtight with taped seams. Good breathability. Structure and colour matches jacket 280P.

Unlined pockets for easy access to the undertrouser's pockets.

Sizes: XS-XXXL.

Material and weight: 100% polyester. 3M-reflective material. 210 g/m². Certified to: EN 471, class 2.



### Hi-Vis Rain Trousers 930Hi-Vis

Elasticated waist. Adjustable leg ends with snap fasteners. PU/polyester. Seams both sewn

and welded. EN 471, Class 2, and EN 343.



### Winter trousers 149P

Warm-lined. Water and dirt repellent. Raised back to keep the lower back warm. Snow guard at the leg ends. Pliable reflective panels, giving a degree of stretch and good breathability as well as being extra durable as they can better withstand wear-and-tear in the wash. Matches structure and

colours of Jacket 430P. ID-card pocket and two tool holders.

Sizes: XS-XXXL.  
Material: 100% polyester.  
3M-reflective material.  
Certified to: EN 471, class 2 and EN 342.



### Hi-Vis Rain Trousers 940Hi-Vis

Polyurethane-coated polyester jersey for a dry feel. Lightweight, stretch versatile material for high comfort. Watertight with sewn and welded seams.  
Sizes: XS-XXXL.

Material and weight: 55% polyester, 45% PU. 3M-reflective material. 170 g/m².

Certified to: EN 471, class 2 and EN 343.



### Hi-Vis Winter Trousers 140PB

Warm lined. Watre and dirt repellent. Cordura reinforcements. Structure and colour match jacket 238PB. ID-card pocket.  
Sizes: XS-XXXL.

Material: 80% polyester, 20% cotton. Quilted lining. 3M-reflective material.

Certified to: EN 471, class 2.

---

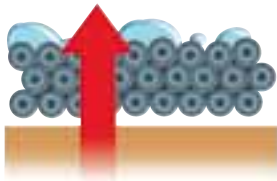
# A LITTLE RAIN HAS NEVER HURT ANYONE

---

## DRY AS COTTON

OUR TROUSERS 115B, feature a weaving technique called Epic. This means an ultrathin polymer binding is wound around the cotton fibres in the woven fabric. This does not affect the appearance and feel of the fabric and the technique is fully environmentally friendly. The result however is excellent! The trousers are resistant to moisture. Not like a real waterproof trousers, but they can handle showers and will keep you dry and comfortable on humid days!

115B is a pair of trousers that can stand up to a shower or two just fine!



115B

## Dry trousers! Waterproof jackets are all very well.

But it is equally important to have dry trousers. There are several good ways to do this. Not only can you choose the work trousers 115B, which we described here opposite. Trousers that can handle showers. Choose comfortable inner trousers such as our 118P to wear under your normal work trousers. They protect against both water and wind. Or pull on a pair of shell trousers over your usual trousers. 931P in Hi-Vis has slit pockets to access your work trouser pockets.



118P

**LUCKY YOU DON'T  
WORK IN COLOMBIA!  
THE WETTEST PLACE  
ON EARTH IS LLORO IN  
COLOMBIA WITH AN  
ANNUAL RAINFALL OF  
ABOUT 13,300 MM.**

**THE MAXIMUM RAIN-  
FALL IN ONE YEAR IN  
SWEDEN WAS MEASURED  
IN MOLLSJÖNÄS,  
VÄSTERGÖTLAND.  
IT WAS 1866 MM**



## Smart Shell Jackets

0.3 mm. That is the difference between being dry and comfortable, or wet and surly. That is the thickness of the waterproof membrane in our shell jackets.

In addition, the jackets are waterproof and of course windproof, easy to move around in, extremely breathable and very lightweight. Basically the only thing they cannot do, is your work, you'll still have to do this yourself. But we promise you they are good workers!





### Trousers 120P

Water and windtight with taped seams. Good breathability. Long zip at leg end. Structure and colour match jacket 220P.

Sizes: XS-XXXL.

Material: 100% polyester. Ripstop.



### Trousers 511N

Water and windtight with taped seams. Good breathability. Two-layer textile, inner lining with polyester tufting for a more comfortable trouser. Suitable for use together with jacket

510PR. Unlined pockets for easy access to undertrouser's pockets.

Sizes: XS-XXXL.

Material and weight: 100% nylon. 190 g/m².



### Inner trousers 118P

Water and windtight with taped seams. Good breathability. Close fit with a degree of stretch allowing it to fit underneath most working trousers.

Soft, comfortable inside in fleece.

Sizes: S-XXXL.  
Material and weight: 100% polyester. 190 g/m².



### Winter Trousers softshell 123P

Made from Softshell for a soft, comfortable garment with good stretch capability. Lined. Water repellent and windtight with good

breathability.

Sizes: XS-XXXL.

Material: 96% polyester, 4% elastane.



### Winter Trousers 157P

Warm lined. Water and windtight with taped seams. Good breathability.

Sizes: XS-XXXL.  
Material and weight: 100% polyester. Quilted lining. 3M-reflective material.



Cut safely with six layers of protection,  
a good fit and stylish design.



#### Saw Protection Trousers 370P

Saw protection lining in six layers at the front for maximum versatility. Made from polyester/CoolMax for best moisture transportation. Reinforced with stretch-Kevlar for extremely high

wear-and-tear strength. Water repellent with good breathability.

Sizes: S-XXL.  
Outer material: 54% polyamide, 30% kevlar, 16% lycra.

Saw protection material: 100% polyester.

Certified to: EN 381-5.  
Design A = saw protection on the front side.  
Class 1: for saws with speeds up to 20 m/s.





### Flame Retardant/Hi-Vis Rain Trousers 303FR

Flame-proof treated PU. Long zip at the leg ends. Structure and colour matches jacket 323FR and parka 342FR.

Sizes: XS-XXXL.

Material and weight: 100% PU with polyester tricot rear. 3M-reflective material. 230 g/m².

Certified to: EN 471, class 2, EN 533 and EN343.



### Rain Dungarees 940PU

Polyurethane-coated polyester jersey for a dry feel. Lightweight, versatile stretch material for high comfort. Watertight with sewn and welded seams.

Sizes: XS-XXXL.

Material and weight: 55% polyester, 45% PU. 170 g/m². Certified to: EN 343.



### Rain Trousers 930PU

Polyurethane-coated polyester jersey for a dry feel. Lightweight, versatile stretch material for high comfort. Watertight with sewn and welded seams.

Sizes: XS-XXXL.

Material and weight: 55% polyester, 45% PU. 170 g/m². Certified to: EN 343



### Chaps 980PU

Polyurethane coated polyester jersey for a dry feel. Lightweight, versatile stretch material for a high level of comfort. Watertight with sewn and welded seams.

Sizes: One Size.

Material and weight: 55% polyester, 45% PU. 170 g/m². Certified in compliance with: EN 343

# Colourful design

Blue overalls. That was the name of work clothes in the 1800s. Fairly obvious really, as the clothes were blue. We have nothing against blue clothing. Yet promoting the same message as old Henry Ford is not really our style, he said, “People can order their car in any colour as long as it's black”.

We prefer to work with colour, shape and patterns as a natural part of our design process. Orange, bright green, red and numerous other colours. All you have to do is to choose. Cheques in different constellations. Striped, comfy shirts, and contrasting stitching are just some of the stylish details you can find on our garments!





## Jackets and vests

# 33

Here you can find comfortable power stretch jackets to wear as a warm second layer, or stylish shell jackets that keep the wind and water away from the body!





### Forestry Jacket 380P

Lightweight, versatile forestry jacket. Made from polyester/CoolMax for best moisture transportation. Reinforced with stretch-Kevlar for extremely high resistance to wear-and-tear.

Water-repellent with good breathability.

Sizes: S-XXL.

Material: 54% polyamide, 30% kevlar, 16% lycra.



### Jacket 172PB

Canvas weave in polyester/cotton with brushed inside for greater wear resistance and a good feel. Front placket protects the zip from wear and provides a good wind protection. Matches trouser

171PB. Concealed ID-card pocket.

Sizes: XS-XXXL.

Material and weight: 65% polyester, 35% cotton. 300 g/m<sup>2</sup>.



### Jacket 205PB

Classic lightweight/thinner model. Structure and colour match trouser 158PB, 150PB and waist-

coat 218PB. ID-card pocket.

Sizes: XS-XXXL.

Material and weight: 65% polyester, 35% cotton. Weight: 245 g/m<sup>2</sup>.



### Flame Retardant Jacket 322FR

Flame-retardant treated cotton. Structure and colour match trouser 302FR. ID-card pocket. Sizes: XS-XXXL.

Material and weight: 100% cotton. 350 g/m<sup>2</sup>. Certified to: EN 531, class A, B1, C1.



### Jacket 202B

Heavyweight cotton for best wear resistance. Metal zip for high heat resistance. Structure and colour match trousers 151B, 181B and 101B. Concealed ID-card.

Sizes: XS-XXXL.

Material and weight: 100% cotton. 375 g/m<sup>2</sup>.





### Jacket Powerstretch 723P

4-way stretch material for a very flexible garment. Breathes and evaporates quickly. Soft and pleasant

brushed inside.

Sizes: XS-XXXL.  
Womens S-XXL.

Material and weight:  
100% polyester.  
200 g/m².



### Jacket Powerstretch 725P

4-way stretch material for a very flexible garment. Breathes and evaporates quickly. Soft and pleasant

brushed inside.

Sizes: XS-XXXL.  
Womens S-XXL.

Material and weight:  
100% polyester.  
200 g/m².





#### Fleece jacket 687P

Microfleece for a soft feel.  
Sizes: XS-XXXL.

Material and weight:  
100% polyester. 280 g/m².



#### Pile jacket 548P

Retro-style faux fur/pile. Mesh-lined for a more comfortable feel.  
Thumb grip.

Sizes: XS-XXXL.  
Material and weight:  
100% polyester. 360 g/m².



#### Jacket Softshell 554P

Made from Softshell for a soft and comfortable garment with good stretch properties. Water repellent and windtight with good breathability. Inner material in soft polar fleece.

Two inner pockets with zips.

Sizes: XS-XXXL,  
Womens S-XXL.  
Material and weight: 96% polyester, 4% PU. 300 g/m².



#### Jacket Softshell 556P

Made from Softshell for a soft and comfortable garment with good stretch properties. Water repellent and windtight with good breathability. Inner material in

soft polar fleece.

Sizes: XS-XXXL.  
Material and weight: 96% polyester, 4% spandex. 300 g/m².



### Jacket 422P

Lightweight 4-way stretch material for a very versatile garment. Water and windtight with taped seams. Good breathability. Ventilated back section.

Watertight zips.

Sizes: XS-XXXL.  
Material and weight: 100% polyester. 118 g/m<sup>2</sup>.



### Shell Jacket 220P

Water and windtight with taped seams. Good breathability. Ventilated underar. Watertight zips. Matches trouser 120P.

Sizes: XS-XXXL.

Material: 100% polyester, Ripstop.



### Shell Jacket 510PR

Water and windtight with taped seams. Good breathability. Ventilated underarms. 2-layer material, inner-lined with polyester tafting for a comfortable

feel. Matches trouser 511N.

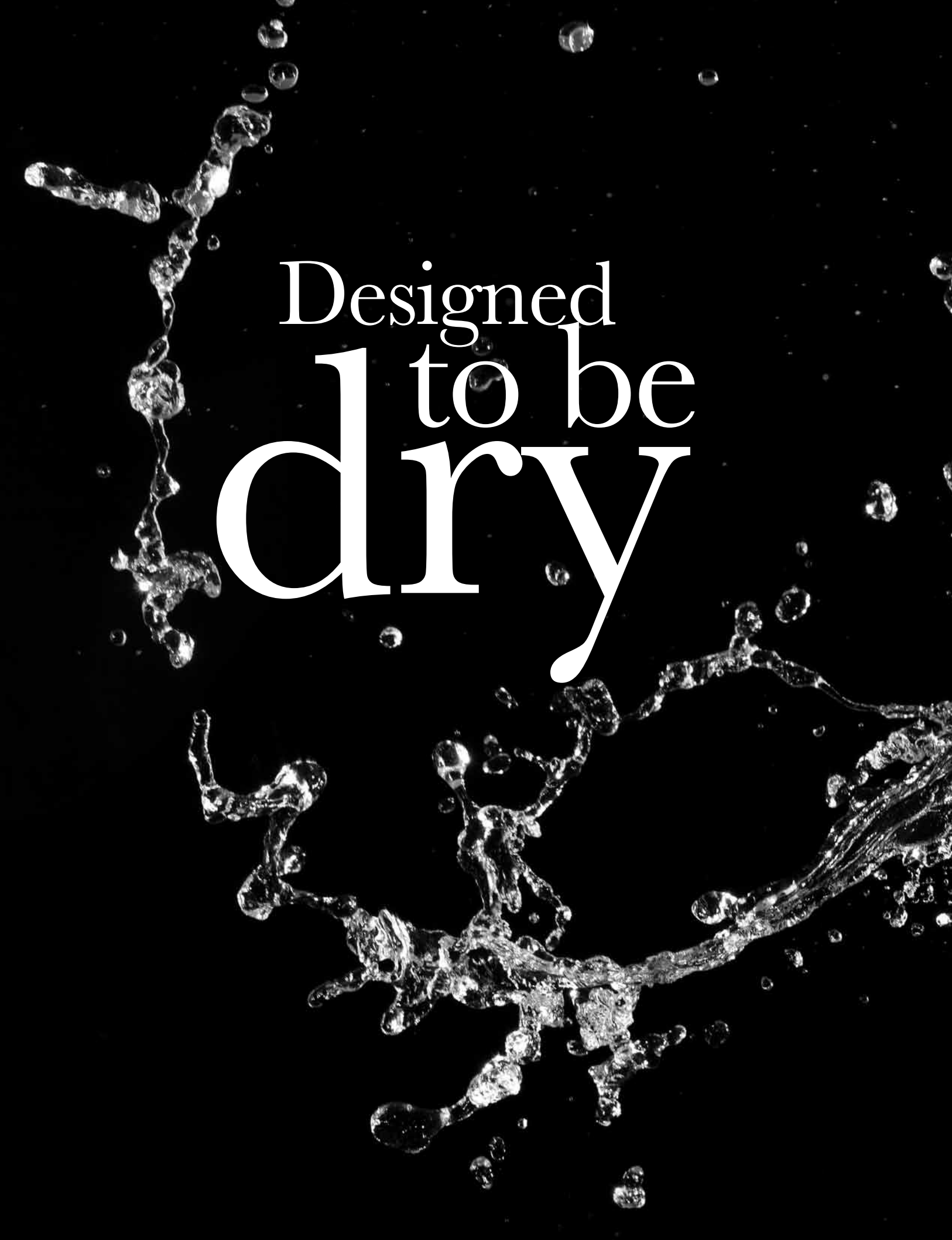
Sizes: XS-XXXL.  
Material and weight: 85% polyester, 15% rayon. 190 g/m<sup>2</sup>.



### Winter jacket 522P

Lightweight-lined. Wind and watertight with taped seams. Good breathability. The material allows moisture to evaporate quickly, keeping the

body warm and dry. Sizes: XS-XXXL. Material and weight: 100% polyester. Lined with polyester lining. Lining weight: 100 g/m<sup>2</sup>.



Designed  
to be  
dry



### Jacket 522P

- ① Waterproof: 8000 mm water column and good breathability: 5000 g/m<sup>2</sup>/24h. ② Taped seams. ③ The light padding makes the jacket suitable as a flexible 3-layer garment. ④ Detachable and adjustable hood. ⑤ Fleece lined collar. ⑥ Water-seal and wind placket protects the front zip. ⑦ Grip-friendly zip pullers. ⑧ Concealed breast pocket. ⑨ Two inside pockets, one with opening for headphones. ⑩ Adjustable cuffs ⑪ Drawstring at bottom. ⑫ Slightly extended back that protects the lower back.



# LINED, FLEECE OR SHELL?



## Fleece Jacket 521P

Mesh-lined for a pleasant feel. Can be integrated with shell jacket 420P or 520P. Together the

jackets become a wind and watertight, warm-lined winter jacket.

Sizes: XS-XXXL.  
Material and weight:  
100% polyester.  
260 g/m<sup>2</sup>.



## Shell Jacket 520P

Watertight and windtight with taped seams. Good breathability. 2-layer material, inner-lined with netting and polyester tafting for a more

comfortable feel. Can be integrated with fleece jacket 421P or 521P to become a warm-lined jacket. Watertight zips.

Sizes: XS-XXXL.  
Material and weight:  
100% polyester.  
190 g/m<sup>2</sup>.



# Use the jackets as needed.



## Hi-Vis Fleece Jacket 421P

Mesh-lined for a pleasant feel. Can be integrated in shell jacket 420P or 520P. Together the jackets become a wind and

watertight, warm-lined winter jacket. Sizes: XS-XXXL. Material and weight: 100% polyester.

3M-reflective material. 260 g/m<sup>2</sup>. Certified to: EN 471, class 3.



## Hi-Vis Shell Jacket 420P

Watertight and windtight with good breathability. 2-layer material, inner-lined with netting and polyester tafting for a comfortable feel.

Can be integrated with fleece jacket 421P or 521P to form a warm-lined jacket. Watertight zips. Sizes: XS-XXXL.

Material and weight: 100% polyester. 3M-reflective material. 210 g/m<sup>2</sup>. Certified to: EN 471, class 3 and EN 343.



### Hi-Vis Jacket 237PB

Water and dirt-repellent. The structure of the weave makes for a durable garment. Structure and colour matches trousers 137PB and 138PB. ID-card pocket.

Sizes: XS-XXXL.

Material and weight: 80% polyester, 20% cotton. 3M-reflective material. 310 g/m².  
Certified to: EN 471, class 3.



### Hi-Vis Jacket 230PB

Structure and colour matches trousers 130PB and 136PB. ID-card pocket.

Sizes: XS-XXXL.

Material and weight: 60% polyester, 40% cotton. 3M-reflective material. 290 g/m².

Certified to: EN 471, class 1.



### Hi-Vis Jacket Softshell 289P

Made from Softshell for a soft and comfortable garment with good stretch properties. Water repellent and windtight with good breathability. Inner material in soft fleece.

Sizes: XS-XXXL.

Material and weight: 91% polyester, 9% spandex. 3M-reflective material. 330 g/m².  
Certified to: EN 471, class 3.



### Hi-Vis Jacket Softshell 408P

Made from Softshell for a soft and comfortable garment with good stretch properties. Water repellent and windtight with good breathability. Closely-fitting garment. The reflective material is flexible, can stretch and has good breathability and is resistant to wear-and-tear in the wash.

Strop for ID card in the right-hand chest pocket.

Sizes: XS-XXXL.

Material and weight: 91% polyester, 9% PU. 3M Scotchlite-reflective material. 330 g/m².  
Certified to: EN 471, class 3.



### Hi-Vis Shell Jacket 905P

Water and windtight with taped seams. Good breathability. 3-layer material making a versatile, highly comfortable jacket. Closely-fitting garment. The reflective material is flexible, has a degree of

stretch and good breathability and resists wear-and-tear in the wash. Watertight zips. Strop for ID card. Sizes: XS-XXXL.

Material and weight: 100% polyester. 3M Scotchlite-reflective material. 170 g/m².

Certified to: EN 471, class 3.



### Hi-Vis Shell Jacket 280P

Water and wind-proof with taped seams. Good breathability. Two-layer material, inner lining with polyester taffeta for a more comfortable feeling. Watertight zips. Matches colour and structure of trouser 177P.

Sizes: XS-XXXL.

Material and weight: 100% polyester oxford. 3M-reflex. 210 g/m².

Certified in accordance with: EN 471, class 3



### Hi-vis Rain Jacket 903Hi-Vis

Polyurethane-coated polyester jersey material for a dry feel. Lightweight, versatile stretch material for a high level of comfort. Watertight with sewn and welded seams. Length 90 cm (size L). ID-card pocket under the right pocket flap.

Sizes: XS-XXXL.

Material and weight: 55% polyester, 45% PU. 3M-reflective material. 170 g/m².

Certified to: EN 471, class 3 and EN 343.





### Hi-Vis Winter Jacket 233P

Removable fleece jacket with mesh functioning as a lining. Wind and watertight with taped seam. Good breathability. ID-card pocket.

Sizes: XS-XXXL.

Material: 100% polyester. 3M-reflective material. Certified to: EN 471, class 3.



### Hi-Vis Winter Jacket 430P

Warm-lined. Water-repellent. Fleece-lined inside collar which is extra high at the neck. Pliable reflective panels, giving a degree of stretch and good breathability as well as being extra durable as they can better withstand wear-and-tear in the wash. Matches the structure and colour of trouser 149P. An inside chest pocket accessible without having to open

the jacket. A transparent pocket in order to see/use a smartphone without having to take it out.

Sizes: XS-XXXL.

Material: 100% polyester. 3M-reflective material.

Certified to: EN 471, class 3 and EN 342.



### Hi-Vis Winter Jacket 238PB

Warm-lined. Water and dirt-repellent. The structure of the weave makes for a durable garment. Structure and colour match trousers 137PB, 138PB and 140PB. ID-card pocket.

Sizes: XS-XXXL.

Material: 80% polyester, 20% cotton. Warm-lined with quilted lining. 3M-reflective material. Certified to: EN 471, class 3.



### Hi-Vis Winter Bomber jacket 468PB

Warm-lined. Front placket protects the zip against wear-and-tear and provides good wind protection. Fleece-lined collar and front pockets. ID-card pocket. Sizes: XS-XXXXL.

Material: 80% polyester, 20% cotton. Pile-lined with quilt lining inside the sleeves. 3M-reflective material.

Certified to: EN 471 class 3.





**Winter Bomber Jacket 267P**

Warm-lined. Underarm ventilation. Fleece-lined collar and front pockets.

ID-card pocket.

Sizes: XS-XXXL.

Material: 100% polyester. Warm-lined with quilted lining.



**Winter Bomber jacket 268PB**

Warm-lined. Front placket protects the zip against wear and provides good wind protection.

Fleece-lined collar and front pockets. ID-card pocket.

Sizes: XS-XXXL.

Material: 55% polyester, 45% cotton. Pile-lined with quilted lining in the sleeves.



**Winter Jacket 273P**

Warm-lined. Underarm ventilation. Extended rear to keep lower back warm. ID-card pocket.

Sizes: XS-XXXL.

Material: 100% polyester.

Warm-lined with quilted lining.



**Winter Jacket 278P**

Warm-lined. Waund and water-tight with taped seams. Good breathability. ID-card pocket.

Sizes: XS-XXXL.

Material: 100% polyester.

Warm-lined with quilted lining.



### Jacket 266B

Warm-lined. Motorbike model with a waxed outer material, perfect for hard work. Detachable	hood in light-grey college material. Extended back to keep the lower back warm.	Sizes: XS-XXXL. Material: 100% waxed cotton.
--	---	---



### Jacket 523P

Winter-lined. Wind and watertight with taped seams. Adjustable waist-	band for optimal fitting.	Material: 94% polyester 6% spandex.
	Sizes: XS-XXXL.	



# Black is back

---

We know. We said we like colourful clothes and personalities. But where does it say one excludes the other! We absolutely love black clothes too! Just take our waxed work jacket in MC model 266B. A modern classic. Works just as well on the bike to and from work, as when you want to feel a little like Steve McQueen on site.



L.BRADOR



### Rain Jacket 903PU

Polyurethane-coated polyester jersey material for a dry feel. Lightweight, versatile stretch material for a high level of comfort. Watertight with sewn

and welded seams. Length 90 cm (size L). ID-card pocket under right pocket flap.

Sizes: XS-XXXL.

Material and weight: 55% polyester, 45% PU. 170 g/m².

Certified to: EN 343.



### Raincoat 904PU

Polyurethane-coated polyester jersey material for a dry feel. Lightweight, versatile stretch material for a high level of comfort. Watertight with sewn and welded seams. Length 110 cm (size L). ID-card pocket under the

right pocket flap.

Sizes: XS-XXXL.

Material and weight: 55% polyester, 45% PU. 170 g/m². Certified to: EN 343.



### Hi-vis Rain Jacket 903Hi-Vis

Polyurethane-coated polyester jersey material for a dry feel. Lightweight, versatile stretch material for a high level of comfort. Watertight with sewn and welded seams. Length 90 cm (size L). ID-card pocket under the right pocket flap.

Sizes: XS-XXXL.

Material and weight: 55% polyester, 45% PU. 3M-reflective material. 170 g/m².

Certified to: EN 471, class 3 and EN 343.



### Flame Retardant/Hi-Vis Rain Jacket 323FR

Flame-retardant treated PU. Hood in the collar. Structure and colour match trouser 303FR. Length 80 cm (size L).

Sizes: XS-XXXL.

Material and weight: 100% PU with polyester tricot rear. 3M-reflective material. 230 g/m².

Certified to: EN 471, class 3, EN 533 and EN 343.



### Flame Retardant/Hi-Vis Rain Parka 324FR

Flame-retardant treated PU. Warm-lined. Hood in the collar. Structure and colour match trouser 303FR. Length 80 cm (size L).

Sizes: XS-XXXL.

Material and weight: 100% PU with polyester tricot rear. 3M-reflective material. 230 g/m².

Certified to: EN 471, class 3, EN 533 and EN 343.





### Vest 218PB

Mesh both front and back making it an airy garment. Bellows with zip allowing the garment to be used over outer	clothing. Adjustable waist belt to distribute the weight between shoulders and hips. ID-card pocket.	Sizes: XS-XXXL. Material and weight: 65% polyester, 35% cotton. 245 g/m².
---	--	--



### Vest 282B

Heavyweight cotton for best wear resistance. Triple-stitched seams for extra durability.	Structure and colour match trousers 151B, 181B and 101B. Concealed ID-card pocket.	Sizes: XS-XXXL. Material and weight: 100% cotton. 375 g/m².
--	--	--



### Hi-Vis Waistcoat 239PB

Water and dirt-repellent. The structure of the weave makes for a durable garment. Structure and colour match trousers 137PB and	138PB. ID-card pocket. Sizes: XS-XXXL. Material and weight: 80% polyester, 20%	cotton. 3M-reflective material. 315 g/m². Certified to: EN 471, class 2.
---	--	---



### Vest Powerstretch 724P

4-way stretch material making this a very versatile garment. Breathes and allows rapid moisture evaporation.	Soft and comfortable brushed inner. Sizes: XS-XXXL. Womens S-XXL.	Material and weight: 100% polyester. 200 g/m².
--	---	--



### Vest 269P

Warm-lined. Inside in contrasting chequered material.	Sizes:XS-XXXL.	Material and weight: 100% polyester oxford. Warm, quilted lining. 140 g/m².
---	----------------	--



### Hi-Vis Waistcoat 282P

Two-tone waistcoat with zip and 1 side pocket.

Sizes: XS-XXXL.

Material and weight: 100% polyester. 3M-reflective material. 120 g/m². Certified to: EN 471, class 3.



### Hi-Vis Waistcoat 283P

Velcro closing.

Sizes: L-XXL.

Material and weight: 100% polyester. 3M-reflective material. 120 g/m². Certified to: EN 471, class 2.



### Hi-Vis Waistcoat 287P

Velcro closing.

Sizes: One Size.

Material and weight: 100% polyester. 3M-reflective material. 115 g/m². Certified to: EN 471, class 2.



### Hi-Vis Waistcoat 403P

Elasticated sides.

Sizes: Child XS/3-XL/15.

Material and weight: 100% polyester. 3M-reflective material. 120 g/m². Certified to: EN 1150.

DESTROY  
TOWN



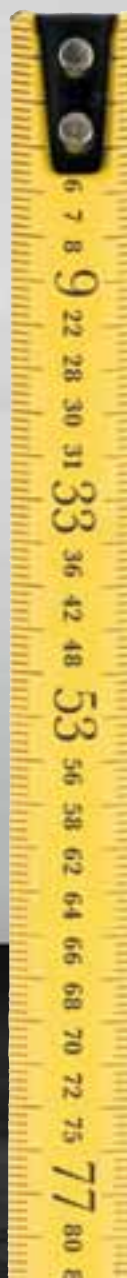


# ARMED WORK

## Tops

The world of fashion has finally caught up with us. Flannel shirts, cheques, and ribbed singlets are at the height of fashion.

# 53





### T-shirt 600B

Enzyme-treated and pre-washed for a more comfortable feel.

Round-knitted with no side seams.

Sizes: XS-XXXL.  
Material and weight:  
100% cotton. 180 g/m².



### Singlet 675B

Rib-knitted. Close fit. Print  
"Design to work" at the side.

Sizes: S-XXL.

Material and weight:  
100% cotton. 220 g/m<sup>2</sup>.



### T-shirt 679B

Heavily brushed cotton. Enzyme-  
treated and pre-washed for a more  
comfortable feel. Print on the  
chest and at the lower rear edge.

Sizes: XS-XXXL.

Material and weight:  
100% cotton. 220 g/m<sup>2</sup>.



### T-shirt 634P

Anti-bacterial in function  
material with UV protec-  
tion. Good ventilation for  
maximum wicking.

Quick-drying.

Sizes: XS-XXXL.

Material and weight:  
100% polyester.  
180 g/m<sup>2</sup>.



### Pique Shirt 635B

Short placket. Raglan sleeves with wristlets.

Sizes: XS-XXXL.  
Womens S-XXL.

Material and weight:  
100% cotton. 190 g/m².



### Pique Shirt 611P

Anti-bacterial functional material with UV protection. Good ventilation for maximum wicking.

Sizes: XS-XXXL.

Material and weight: 100% polyester. 180 g/m².



### Pique Shirt 619P

Anti-bacterial functional material with UV protection. Good ventilation for maximum wicking.

Sizes: XS-XXXL.

Material and weight:  
100% polyester.  
180 g/m².





### Pique shirt 678B

Heavyweight cotton for best fit and shape retention. Enzyme-treated for a soft, comfortable

feel. Slit at the lower edge.

Sizes: XS-XXXL.

Material and weight:  
100% cotton. 280 g/m².

A truly durable long-running  
bestseller! Perfect as a messenger  
and image garment.



**Sweatshirt 637PB**

Soft and pleasant brushed  
inside. Ribbed neck, lower  
edge and sleeve cuffs.

Sizes: XS-XXXL.

Material and weight:  
65% cotton, 35% polyes-  
ter. 300 g/m<sup>2</sup>.



### Sweatshirt 676B

Rugby sweater in brushed cotton for a softer feel. Heavyweight, compact material giving support,	stability and long life. Large print on the back. Sewn-on badge on the right sleeve and left chest.	<div data-bbox="909 861 1140 904"> <p>Sizes: XS-XXXL.</p> </div> <div data-bbox="909 904 1140 970"> <p>Material and weight: 100% cotton. 320 g/m².</p> </div>
--	---	---



### T-shirt 628B

Long-sleeved round-necked T-shirt in heavy-	weight cotton. Sizes: XS-XXXL.	<div data-bbox="909 1834 1164 1876"> <p>Material and weight:</p> </div> <div data-bbox="909 1876 1164 1893"> <p>100% cotton. 190 g/m².</p> </div>
---	--------------------------------	---



### Sweatshirt 643PB

Soft and pleasant brushed inside. Short zip at the collar.

Sizes: XS-XXXL.

Material and weight:  
65% cotton, 35% polyester. 300 g/m<sup>2</sup>.





### Sweater 664UA

Heavyweight cable-knitted sweater. Checked flanneling material on the inside of the neck.

Elbows reinforced with soft black suede leather.

Sizes: XS-XXXL.

Material: 70% acrylic, 30% wool.



### Hooded sweatshirt 632PB

Hood with cord. Through-pocket across the stomach.

Sizes: XS-XXXL.

Material and weight: 60% cotton, 40% polyester. 300 g/m².



### Sweatshirt 654PB

Soft and pleasant brushed inside. Closely-fitting.

Sizes: XS-XXXL.

Material and weight:  
65% cotton 35% polyester. 300 g/m<sup>2</sup>.



### Hooded sweatshirt 656PB

Soft and pleasant brushed inside. Closely-fitting.

Sizes: XS-XXXL.

Material and weight:  
65% cotton 35% polyester. 300 g/m<sup>2</sup>.



### Sweatshirt 662PB

Made from hardwearing strong cotton/polyester. Enzyme-treated and pre-washed for a more comfortable feeling.

Logo on the right sleeve and L.Brador embroidered on the lower back.

Sizes: XS-XXXL.

Material and weight: 65% cotton 35% polyester. 360 g/m².



### Hooded sweatshirt 663PB

Made from heavyweight cotton/polyester for a hard-wearing garment. Enzyme-treated and pre-washed for a more

comfortable feel. Logo on right shoulder and left sleeve. Hood lining in a rippled structure in contrasting colours.

Sizes: XS-XXXL.

Material and weight: 65% cotton 35% polyester. 360 g/m².







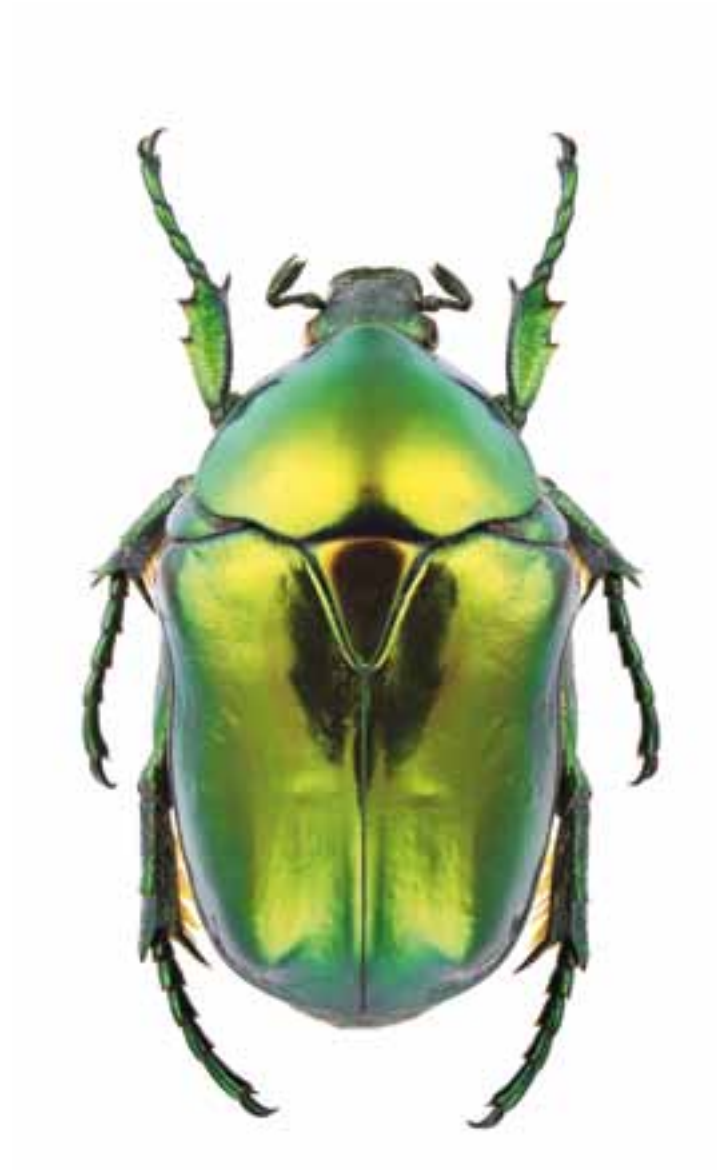


# Our new Hi-Vis collection has not only become better. It's more attractive, more comfy and has smarter features too.

Does that sound too good to be true. It's both good and true. The primary purpose of Hi-Vis clothing is of course to be seen. We have made sure to make the collection a little better in several other ways. We have looked at the cut, we have optimised the fit, carefully selected materials and refined our stitching. Just look at a detail such as our new reflectors. They are not fully fitted, but striped. This gives a more flexible garment and improves the breathability of the garment as the air passes between the stripes. Wear during washing is reduced as the reflectors are more flexible. Welcome to our best designed Hi-Vis collection.

Designed to be seen, and worn.

# Fluorescenc



# e is perfect.



Jacket 430P

- ① Outer shell that is waterproof and breathes. ② Taped seams. ③ Winter lined.  
④ Fluorescent shell fabric in ripstop. ⑤ Detachable and adjustable hood. ⑥ Extra high, fleece-lined collar with additional height at the neck. ⑦ Water-seal and wind placket in front and behind the front zip. ⑧ Breast pocket with ID card holder. ⑨ Napoleon pocket with external access. ⑩ Two inner pockets. ⑪ Fleece lined side pockets. ⑫ Cuffs with thumb hole. ⑬ Drawstring at the waist and bottom. ⑭ Slightly extended back that protects the lower back. ⑮ 3M Scotchlite 5510 reflectors Smoother, more durable to wear, breathes between the stripes. ⑯ Reflectors over the shoulders for additional safety in addition to the EN standards.



### Hi-Vis T-shirt 413P

Anti-bacterial soft functional material. Close fit with a degree of stretch. The reflective panels are pliable, allowing a certain stretch and good

breathability, and have a better resistance to wear-and-tear in the wash.

Sizes: XS-XXXL.

Material and weight: 100% polyester. 3M-reflective material. 150 g/m<sup>2</sup>. Certified to: EN 471, class 2.



### Hi-Vis T-shirt 284P

Lycra in the neck ribbing.

Sizes: XS-XXXL.

Material and weight: 100% polyester. 3M-reflective material. 200 g/m<sup>2</sup>.

Certified to: EN 471, class 2.



### Hi-Vis T-shirt 410P

Anti-bacterial soft functional material. Close fit with a degree of stretch.

Sizes: XS-XXXL.

Material and weight: 100% polyester. 150 g/m<sup>2</sup>. Hi-Vis only in daylight. The fabric is equivalent to EN 471 and the Hi-Vis section meets EN 471 class 2.





### Hi-Vis Pique shirt 406P

Anti-bacterial, soft functional material. Good ventilation for maximum wicking. Close-fitting with a degree of stretch. The reflective panels are flexible with a degree of

stretch and good breathability, and good resistance to wear-and-tear in the wash.

Sizes: XS-XXXL.

Material and weight: 100% polyester. 3M-reflective material. 150 g/m².

Certified to: EN 471, class 2



### Hi-Vis Pique shirt 291P

Good ventilation for maximum wicking. Short placket.

Sizes: XS-XXXL.

Material and weight: 100% polyester, CoolMax. 3M-reflective material. 185 g/m².

Certified to: EN 471, class 2.



### Hi-Vis Pique shirt 298P

Anti-bacterial UV protected functional material. Good ventilation for maximum wicking. Quick-drying.

Sizes: XS-XXXL.

Material and weight: 100% polyester. Stretch reflective material. 180 g/m².

Certified in accordance with: EN 1150.



### Hi-Vis Sweatshirt 285P

Half-high collar with short zip. Ribbed neck, lower edge and sleeves.

Sizes: XS-XXXL.

Material and weight: 100% polyester. 3M-reflective material. 240 g/m<sup>2</sup>.

Certified to: EN 471, class 1.



### Hi-Vis Sweatshirt 297P

Half-high collar with short zip. Ribbed neck, lower edge and sleeve cuffs.

Sizes: XS-XXXL.

Material and weight: 100% polyester. 3M-reflective material. 240 g/m<sup>2</sup>.

Certified to: EN 471, class 3.



### Hi-Vis Sweatshirt 415P

Made from polyester with good wicking function. Close-fitting with a degree of stretch. Features both a hood and high collar to warm the neck, head, throat and

chin. The reflective areas are flexible with a degree of stretch and good breathability, and has a good resistance to wear-and-tear in the wash.

Sizes: XS-XXXL. Material and weight: 100% polyester. 3M-reflective material. 240 g/m<sup>2</sup>. Certified to: EN 471, class 3.



### Shirt 685B

Classic jeans shirt in soft denim. Enzyme-treated and pre-washed for a comfortable feel.

Checkered flannel fabric on the inside of the collar.

Sizes: S-XXXL.

Material and weight:  
100% cotton. 230 g/m².



### Shirt 686B

Classic Oxford shirt. Easy care-treated for easy ironing.

Sizes: XS-XXXL.

Material and weight:  
100% cotton. 135 g/m².



### Shirt 684B

Classic flannel shirt. Enzyme-treated and pre-washed for a comfortable feel. Contrasting

fabric in denim on the inside of the collar, placket and cuffs.

Sizes: XS-XXXL.

Material and weight: 100% cotton. 180 g/m².



### Shirt 606B

Classic flannel shirt.

Sizes: S-XXXL.

Material and weight: 100% cotton. 150 g/m².





### Shirt 648B

Lined flannel shirt.  
Close-fitting.

Sizes: XS-XXXL.

Material and weight:  
100% cotton, quilt-lining.  
175 g/m<sup>2</sup>.



### Fleece Shirt 553P

Quilted lining.

Sizes: XS-XXXL.

Material and weight:  
100% polyester.  
230 g/m<sup>2</sup>.



### Shirt 683PB

Two chest pockets with flaps. Push-buttons in metal. Withstands industrial	washing at 85 degrees C.	Material and weight: 65% polyester, 35% cotton, 180 g/m².
	Sizes: XS-XXXXL.	



### Shirt 682B

Two chest pockets with flaps. Push-buttons in metal. Withstands	industrial washing at 85 degrees C.	Sizes: XS-XXXXL.
		Material and weight: 100% cotton, 190 g/m².



### Shirt 681PB

Two chest pockets with flaps. Push-buttons in metal. Withstands

industrial washing at 85 degrees C.  
Sizes: XS-XXXXL.

Material and weight:  
65% polyester, 35% cotton, 180 g/m².



### Shirt 680B

Two chest pockets with flaps. Push-buttons in metal. Withstands

industrial washing at 85 degrees C.

Sizes: XS-XXXXL.  
Material and weight:  
100% cotton, 190 g/m².

# Wool. High level, functional design

---

It is not always on the drawing board that the best things are designed. In some cases it is actually on a windy hill somewhere in New Zealand. Merino wool is an unbeatable material developed over thousands of years, for completely natural reasons. Sheep do not like to freeze. Neither do we. The wool fibre consists of millions of tiny air pockets that store your body heat when you're hot. When the body is cooled, it releases just enough heat for you to maintain a steady and comfortable temperature close to the body. The wool heats just as well when wet or dry. It is naturally antibacterial and is one of the finest materials you can wear next to the body. We wouldn't even consider trying to find a substitute for wool. Designed by nature, for work.







## Under- garments **77**

Our thermal undergarments made of wool are unbeatable when it comes to keeping warm. Combine with our new sock collection!





### Flame Retardant Boxer shorts 707FR

Flame retardant-treated merino wool for maximum warmth. Very soft and comfortable.

Sizes: XS-XXXL.

Material and weight: 70% merino wool, 30% Protex-M. 210 g/m<sup>2</sup>. Certified to: EN 531 and ENV 50354 and meets the Öko-Tex 100 standards.



### Balaclava 709FR

Flame retardant-treated Merino wool. Very soft and comfortable.

Material and weight: 70% Merino wool, 30% Protex-M. 210 g/m<sup>2</sup>. Certified to: EN 531 and ENV 50354 and meets the Öko-Tex 100 standards.



### Flame Retardant Sweater 714FR

Flame retardant-treated merino wool. Very soft and comfortable. Can be used as one of a 2-payer garment in extreme cold.

Sizes: XS-XXXL.

Material and weight: 70% merino wool, 30% Protex-M. 360 g/m<sup>2</sup>. Certified to: EN 531 and ENV 50354 and meets the Öko-Tex 100 standards.



### Flame Retardant Long Johns 715FR

Flame retardant-treated heavy-weight merino wool for maximum warmth. Very soft and comfortable.

Sizes: XS-XXXL.

Material and weight: 85% merino wool, 15% Protex-M. 360 g/m<sup>2</sup>. Certified to: EN 531 and ENV 50354 and meets the Öko-Tex 100 standards.



### Flame Retardant Turtleneck 705FR

Polo with zip. Flame retardant-treated merino wool for maximum warmth. Very soft and comfortable.

Sizes: XS-XXXL.

Material and weight: 70% merino wool, 30% Protex-M. 210 g/m<sup>2</sup>.

Certified to: EN 531 and ENV 50354 and meets the Öko-Tex 100 standards.



### Flame Retardant Sweater 706FR

Flame retardant-treated merino wool for maximum warmth. Very soft and comfortable.

Sizes: XS-XXXL.

Material and weight: 70% merino wool, 30% Protex-M. 210 g/m<sup>2</sup>.

Certified to: EN 531 and ENV 50354 and meets the Öko-Tex 100 standards.



### Flame Retardant T-shirt 708FR

Flame retardant-treated merino wool for maximum warmth. Very soft and comfortable.

Sizes: XS-XXXL.

Material and weight: 70% merino wool, 30% Protex-M. 210 g/m<sup>2</sup>.

Certified to: EN 531 and ENV 50354 and meets the Öko-Tex 100 standards.



### Flame Retardant Long Johns 713FR

Flame retardant-treated merino wool for maximum warmth. Very soft and comfortable.

Sizes: XS-XXXL.

Material and weight: 70% merino wool, 30% Protex-M. 210 g/m<sup>2</sup>.

Certified to: EN 531 and ENV 50354 and meets the Öko-Tex 100 standards.

# Equip yourself right in the winter

Don't complain. You could be working at Vostok station. One of the most inaccessible and inhospitable places on earth. Located on Antarctica, 3500 m.a.s.l. The researchers who work there often need many weeks for the body to adjust to the extreme conditions. Increased blood pressure, weight loss, insomnia, poor appetite and nausea are common ailments for new arrivals. On July 21, 1983 a temperature of -89.2 °C was measured, the lowest temperature ever recorded. The mean annual temperature is about 57 degrees below zero.



The "heat-record" at Vostok station is 12.2 degrees below zero, i.e. it has never been above freezing.



## LUMBERJACK

Surely no one could have missed the fashion with chequered lumberjack shirts? Obviously L.Brador has followed the trend. Our lined stylish shirt 648B is up there both in style and function. Brushed flannel and a warm lining makes this the autumn's and winter's most stylish garment. Chequered, right, red!

## Fingertip sensitivity

The combination of warm hands and touch sensitivity is not easy. Yet as materials are developed, so are gloves! Guide has developed a completely windproof and waterproof glove 6W. A smart 3-layer technology makes it possible. The outer material is synthetic leather with reinforced PVC at exposed areas. The next layer is a waterproof membrane, and closest to the hand a pleasant fleece lining. The pre-shaped finger design maximises mobility. The cuff is made of insulating neoprene. Anti-vibration padding is strategically placed in the palm. The glove is chrome-free and made from washable, silicone-free material.



### LAYER ON LAYER ORIGINAL

THE GOOD INSULATION PROPERTIES OF A VACUUM FLASK COME FROM ITS DOUBLE-WALLS WITH THE VACUUM IN BETWEEN. AS THERE IS A VACUUM BETWEEN THE WALLS NO MATERIAL CAN LEAD OFF THE HEAT. THE SAME PRINCIPLE AS DRESSING IN LAYERS, ALTHOUGH OF COURSE, IT'S DIFFICULT TO CREATE A VACUUM BETWEEN THE LAYERS!

## L.BRADOR SOCKS ENSURE THAT YOU CAN KEEP ALL YOUR TOES UNTIL APRIL - AT LEAST.



### LB Extreme socks

Function when it really counts. 80% wool keeps you warm even on the coldest days. The specially knitted sections protect against rubbing and wear. Felted wool sole for extreme wear resistance and heat. Extra air and elastic channels on the foot and ankle ensure an excellent fit. Elastane throughout the sock keeps it in place all day without rubbing or sliding down. The long shaft goes over the boot edge.



### LB CoolMax wool sock

CoolMax and wool is a good combination. The wool's thermal and insulating properties and CoolMax moisture wicking properties give dry and comfortable feet whatever the weather. Wool in the whole shaft for warmth, and CoolMax in the sole (half terry) for moisture wicking. A real all-round sock for both winter and summer. Extra elastic for better fit.



### LB Thin wool socks

A thin wool sock works in all situations. The wool's thermal properties provide the right comfort in the shoes. Elastane, minimal seams and V-stitched heel provides an optimal fit. Wool warms just as well in the wet as the dry. The wool fibre can absorb up to 35% moisture, without you feeling moisture on your feet. Have you ever seen a sheep freeze?



# KEEP YOUR HEAD ANYTHING BUT COLD

When there's a really cold northerly blowing, and the mercury drops down a few degrees below zero, there is no alternative. Slip on your beautiful "Belker" hat\* 583UA knitted in 100% wool with Windstopper lining. The wool keeps you warm, and the windstopper lamination ensures that the wind cannot pass through! Cool style. Warm hat.

*\* Have you never seen Hill Street Blues?*



## THE WIND CHILLS MORE THAN YOU THINK.

IT BECOMES COLDER THE MORE THE WIND BLOWS. BE SURE TO DRESS RIGHT! EXAMPLE: AT A WIND SPEED OF 7 M/S AND -5°C THE COOLING EFFECT CORRESPONDS TO -17 GRADER CELSIUS IN CALM CONDITIONS.

CORRESPONDING TEMPERATURE							
WIND SPEED M/S	0	0	-5	-10	-15	-20	-25
	2	-2	-7	-12	-17	-23	-28
	7	-11	-17	-25	-32	-38	-45
	11	-16	-23	-31	-38	-46	-53
	18	-18	-26	-34	-42	-49	-57
	20	-19	-28	-36	-43	-52	-59

# LINED FOR FROSTY DAYS



It can be seen if you're freezing. And you can also be seen without freezing! 430P is a thermal lined workhorse that keeps you warm. Extra high, fleece-lined collar and side pockets. Water-seal and wind placket in front and behind the front zip, stylish cuffs with thumb hole and an extended back.



New and hot! Maintain warmth and style with our latest warm-lined winter jacket 523P. The material is a flexible polyester with a stylish and discreet cheque. The cut allows maximum mobility. Cuffs with thumb hole, detachable hood with drawstring.



A wolf in sheep's clothing! Our undershirt 714FR is a real hothouse. It looks like an everyday undershirt, but is designed of extra thick and soft Merino wool. A perfect 2-layer garment when the cold bites at its worst. Millions cannot be wrong! Wool warms in all weathers!



Match our undershirt 714FR with the underpants 715FR! Without a doubt, the best thing to wear under work trousers on cold winter days. Of extra thick and soft Merino wool. The only choice if you don't want to freeze to death!

## The undergarment that deals with subzero temperatures and keeps your underwear snow-free!



Now it's one-piece undergarments that are the fashion! The response to our one-piece undergarment 718UP has broken all records! No wonder. Practical and nice not to have a gap at the back when bending over. Constructed of two layers of polyester on the inside for maximum moisture wicking. Exterior of the finest Merino wool that keeps you warm in the wet or dry. Conforms to requirements set out in the Öko-tex standard. Material: 50% Merino wool, 50% polyester. Weight: 230 g/m².

## A BOOT FOR THE COLD

Are you working outside this winter, then you have to have dry feet!

We recommend a really big boot. For example, Protective boot 695

from Arbesko. A truly warm lined boot with side zip

for easy fitting. Aluminium toecaps and soft

penetration protection without metal.

Leather/Cordura uppers that guaranteed to keep

the moisture out. Lined with wool waterproof

membrane. In addition, a warm fleece insole and

Shock absorption in both the heel and toe.

With this boot you'll stand firm and

warm until the spring hits!





### Turtleneck 716UP

Half-high collar with zip. Very soft and comfortable merino wool for maximum warmth. Polyester on the inside for best wicking. Meets Öko-tex standards.

Sizes: XS-XXXL.

Material and weight: 50% merino wool, 50% polyester. 230 g/m².



### Sweater 717UP

Very soft and comfortable merino wool for maximum warmth. Polyester on the inside for best wicking. Meets Öko-tex standards.

Sizes: XS-XXXL.

Material and weight: 50% merino wool, 50% polyester. 230 g/m².



### Long Johns 712UP

Very soft and comfortable merino wool for maximum warmth. Polyester on the inside for best wicking. Meets Öko-tex standards.

Sizes: XS-XXXL.

Material and weight: 50% merino wool, 50% polyester. 230 g/m².



### Undergarment 718UP

Full-body undergarment to primarily keep the lower back warm. Very soft and comfortable merino wool for maximum warmth. Polyester on the inside for best wicking. Rear opening with

zip. Meets Öko-tex standards.

Sizes: XS-XXXL.

Material and weight: 50% merino wool, 50% polyester. 230 g/m².



### Undergarment 730P

Set consisting of round-necked undershirt and long-johns. In polyester

for best wicking.

Sizes: XS-XXXL.

Material and weight:  
100% polyester.  
170 g/m<sup>2</sup>.

Smart, fleece lined,  
stretch inner trousers  
with good breathability  
that keep out the  
wind and moisture!



### Boxer shorts 599B

Soft stretch material. Elasticated waist with extra soft inside.

Sizes: XS-XXXL.

Material and weight: 95% cotton and 5% elastane. 180 g/m<sup>2</sup>.



### Inner trousers 118P

Water and windtight with taped seams. Good breathability. Close fit with a degree of stretch allowing it to fit underneath most working trousers. Soft, comfortable inside in fleece.

Sizes: S-XXXL.

Material and weight:  
100% polyester. 190 g/m<sup>2</sup>.



### Socks 748B Sport

A good all-round sock for both spring and summer. V-knitted heel and terry sole for best comfort.

Sizes: 36/39-44/47.  
Material: 80% cotton, 20% polyamide.



### Socks 749B Casual

Smooth-knitted classic sock suitable for both the office, work and leisure use. Lycra for good comfort and fit.

Sizes: 36/39-44/47.  
Material: 80% cotton, 15% polyester, 5% lycra.



### Socks 747U Thin Wool

Wool for a warm, comfortable feel. Good moisture absorption keeps the foot dry. Thin quality for use as inner sock or on its own on warmer days. Elastane, minimal seams and v-knitted heel

for best fit.  
Sizes: 36/39-44/47.  
Material: 60% wool, 35% polyamide, 5% elastane.



### Socks 746C Thin CoolMax

CoolMax for best moisture control. Thin quality for use as inner sock or on its own on warmer days. Lycra, elasticated channel for best comfort and fit.

Sizes: 36/39-44/47.  
Material: 80% CoolMax, 17% polyamide, 3% lycra.



### Socks 744C CoolMax Work

CoolMax for best moisture control. Reinforced at the sole up to the heel for extra durability. Terry sole for a soft and shock absorbing effect. Extra air channels and lycra for best fit.

Extra wide and soft elastic for comfort.  
Sizes: 36/39-44/47.  
Material: 80% CoolMax, 17% polyamide, 3% lycra.



### Socks 745C CoolMax Work 3/4

CoolMax for best moisture control. Reinforced sole up to the heel for extra durability. Terry sole for a soft and shock absorbing effect. Extra air channels and lycra for the best fit. Extra wide and soft elastic for comfort.

Shorter shaft for a cooler sensation.  
Sizes: 36/39-44/47.  
Material: 80% CoolMax, 17% polyamide, 3% lycra.





### Socks 743CU CoolMax Wool

Wool through the entire sock for a warming and insulating effect. Reinforced with CoolMax and polyamide at the sole up to the heel for good moisture control and extra durability. Wool terry in the sole for a soft, shock absorbing

effect. Extra elasticsation for the best fit.

Sizes: 36/39-44/47.

Material: 41% CoolMax, 35% wool, 21% polyamide, 3% elastane.



### Socks 750U Heavy

Wool in the entire sock for a warming, insulating effect. Reinforced with acrylic and polyamide in the sole up to the heel for extra durability. Wool terry in the sole for a soft and shock absorbing effect.

Air channels and extra elastic for best fit.

Sizes: 36/39-44/47.

Material: 49% wool, 25% acrylic, 23% polyamide, 3% elastane.



### Socks 742U Wool

Wool/acrylic in a thick quality for a warming sock. Lycra for good comfort and and fit.

Sizes: 36/39-44/47.

Material: 50% wool, 38% acrylic, 10% polyamide, 2% lycra.



### Socks 741U Extreme Boot

Our finest wool retains the warmth even on the coldest days. Filtered wool sole for extreme wear resistance and warmth. Wool terry in the entire sock for a soft, shock-absorbant effect. Elastane, elastic channel and extra air

channels for best comfort and fit.

Sizes: 36/39-44/47.

Material: 70% wool, 27% polyamide, 3% elastane.



### Socks 740U Extreme

Our finest wool retains the warmth even on the coldest days. Filtered wool sole for extreme wear resistance and warmth. Wool terry in the entire sock for a soft, shock-absorbant effect. Elastane, elastic channel and extra air channels for

best comfort and fit. Long shaft to come over the boot edge.

Sizes: 36/39-44/47.

Material: 70% wool, 27% polyamide, 3% elastane.

The adage says  
“Details make the man”.  
We say that the details make  
the difference, irrespective of  
whether you’re male or female.



On work clothes it's the small things that make the difference between good and bad. A pocket that is 1 cm too small, is too small. End of story. The membrane in your jacket that keeps the rain out is just 0.3 mm thick. You have to be careful with the little things. Why not be as fussy when choosing accessories as well. A stylish belt, smart socks or a warm hat are small things that make sure you do not lose your trousers, get blisters or frozen ears. Our accessories also have a great design and good quality. So be fussy and particular with the details. We are. Designing the details.

---



## Accessories 87

They always say the details make the big picture. We subscribe to that. Top off your outfit with a stylish hat, or a matching belt!





**Hat 564PW**

Long earflaps that can be buttoned together.  
Lined with windstopper and warm fake fur.  
Material: 80% polyester, 20% wool.



**Hat 584P**

Long earflaps and velcro fastening.  
Lined with warm fake fur.  
Material: 100% polyester.



**Hat 562A**

Knitted with long earflaps.  
Lined with warm fake fur.  
Embroidered neck.  
Material: 100% acrylic.



**Hat 588P**

Soft fleece.  
Adjustable for optimal fit.  
Material: 100% polyester.



**Hat 563A**

Knitted with embroidered logotype.  
Material: 100% acrylic.



**Hat 566A**

Knitted.  
Half-lined with fleece.  
Material: 100% acrylic.



**Hat 582UA**

Rib-knitted.  
Polycotton-lined.  
Material: 100% wool/acrylic.



**Hat 583UA**

Rib-knitted.  
Polycotton-lined Windstopper.  
Material: 100% wool/acrylic.



**Hat 596A**

Rib-knitted "sweep's hat".  
Material: 100% acrylic.



**Hat 597UA**

Classic-knitted model with retro-pattern.  
Material: 50% merino wool, 50% acrylic.



**Hat 598UA**

Heavyweight-knitted hat, long model.  
Material: 100% wool/acrylic.





### Bandana 585P

Soft microfibre.  
Can be used as a scarf, bandana, headband, hat, balaclava etc  
Material: 100% polyester.



### Hat 581B

Thin-knitted longer model.  
Material: 100% cotton.



### Balaclava 709FR

Flame retardant-treated Merino wool.  
Very soft and comfortable.  
Material and weight: 70% Merino wool, 30% Protex-M. 210 g/m<sup>2</sup>.  
Certified to: EN 531 and ENV 50354 and meets the Öko-Tex 100 standards.



### Balaclava 731PBA

Material and weight: 65% polyester, 29% cotton, 6% polyamide. 220 g/m<sup>2</sup>.



### Cap 592P

Adjustable tape.  
Material: 100% polyester.



### Cap 593B

Elasticated neck.  
No centre-seam allows for profiling.  
Material: 100% cotton.



### Welding cap 580B

Material: 100% cotton.



### Helmet Hood

Knitted skater model.  
Material: 100% acrylic.



### Helmet Hood

Flannel-lining or warm-lined with heat-retaining intermediate lining.  
Covers neck and throat.  
Velcro fastening and attachment points for helmet fittings.  
Material: Outside 70% polyester, 30% cotton.  
Inside 100% polyester fleece.



### Southwest 981PU

Classic model.  
Material and weight: 55% polyester, 45% PU. 170 g/m<sup>2</sup>.  
Certified in accordance with: EN 343.



### Belt 590L

Heavy, vegetably-tanned oxhide.  
Width 4 cm, length 130 cm, waist size 110 cm.  
Easy to shorten.



### Belt 577PG

Elasticated with polyester and rubber.  
Length 120 cm.



### Belt 594P

Buckle in impressed rubber for reducing scratching risk on sensitive surfaces.  
100% polyester band.  
Length 120 cm.



### Braces 568P

Suitable for use with saw protection trousers 370P.  
Adjustable at the front.  
Max length 130 cm.  
Straps in leather and elasticated braces in polyester/polyamide.



### Braces 579PP

Adjustable front, elasticated rear.  
Extra strong clips.  
Max length 115 cm.  
100% polypropylene.



### ID card pocket 586

ID-card pocket applied as a transfer decal using a heat-press.  
Outer dimensions: 122x87mm.  
Material: Polyester.



### ID card pocket 11PB

Double velcro fastening for pockets with flaps that have velcro fastening.  
Suitable for most L. Brador jackets.  
For ID-cards with max dims 10x7cm.



### Knee-pad 571PP

Grey standard model.  
Made from polyethelene.  
Width 15 cm, height 20 cm, thickness 2 cm.



### Knee-pad 576LP

Very clever design enabling problem-free use for the user. Wide elastic strap, positioned to avoid cutting into the knee.  
Polyester reinforced pvc and leather.  
Padded with soft cell foam plastic.



### Apron 982PU

Polyurethane-coated polyester jersey for a dry feeling. Lightweight and versatile material with comfortable stretch for a

high degree of comfort.  
Size: 115x85 cm.

Material and weight:  
50% PU and 50% polyester. 190 g/m².  
Certified in accordance with: EN 343.



### Apron 983PVC

Size 115x85. Made from polyurethane coated polyester jersey. A light-

weight stretch material for a comfortable fit.

Material: 50% PU and 50% PVC.  
Weight: 310 g/m².

Model	Size	Art. no.	Page	Model	Size	Art. no.	Page	Model	Size	Art. no.	Page	Model	Size	Art. no.	Page		
101B Black	C44	810000018	12	103B Black	C52	810001198	12	105PB Black	C44	800035743	10	112PB Yellow	C50	810004598	21		
	C46	810000026	12		C54	810001206	12		C46	800035750	10		C52	810004606	21		
	C48	810000034	12		C56	810001214	12		C48	800035768	10		C54	810004614	21		
	C50	810000042	12		C58	810001222	12		C50	800035776	10		C56	810004622	21		
	C52	810000059	12		C60	810001230	12		C52	800035784	10		C58	810004630	21		
	C54	810000067	12		C146	810001271	12		C54	800035792	10		C60	810004648	21		
	C56	810000075	12		C146	810001271	12		C56	800035800	10		Orange	C44	800006934	25	
	C58	810000083	12		C148	810001289	12		C58	800035818	10			C46	800006942	25	
	C60	810000091	12		C148	810001289	12		C6	800035826	10			C48	800006959	25	
	C148	810000133	12		C150	810001297	12		D96	800040396	10			C50	800006967	25	
	C148	810000141	12		C150	810001297	12		D100	800040404	10			C52	800006975	25	
	C150	810000158	12		C152	810001305	12		D104	800040412	10			C54	800006983	25	
	C152	810000166	12		C152	810001305	12		Grey/black	C44	800035834			10	C56	800006991	25
	C154	810000174	12		C154	810001313	12			C46	800035842			10	C58	800007007	25
	C156	810000182	12		C154	810001313	12			C48	800035859			10	C60	800007015	25
	D96	810000224	12		C156	810001321	12			C50	800035867			10	C62	800007023	25
	D100	810000232	12		C156	810001321	12			C52	800035875			10	C64	800007031	25
	D104	810000240	12		D96	810001362	12			C54	800035883			10	C44	800007064	25
	D108	810000257	12		D100	810001370	12			C56	800035891			10	C46	800007072	25
	D112	810000265	12		D104	810001388	12			C58	800035909			10	C48	800007080	25
	D116	810000273	12		D108	810001396	12			C60	800035917			10	C50	800007098	25
	Women's 36	810000315	12		D112	810001404	12			D96	800040420			10	C52	800007106	25
	Women's 38	810000323	12		D116	810001412	12			D100	800040438			10	C54	800007114	25
	Women's 40	810000331	12		Women's 36	810001453	12			D104	800040446		10	C56	800007122	25	
Women's 42	810000349	12	Women's 38	810001461	12	Black/brown	C44	800035925	10	C58	800007130	25					
Women's 44	810000356	12	Women's 40	810001479	12		C46	800035933	10	C60	800007148	25					
C44	810000398	12	Women's 42	810001487	12	C48	800035941	10	C62	800007155	25						
C46	810000406	12	Women's 44	810001495	12	C50	800035958	10	C64	800007163	25						
C48	810000414	12	C44	800026270	16	C52	800035966	10	113B Khaki	C44	800018244	21					
C50	810000422	12	C46	800026288	16	C54	800035974	10		C46	800018251	21					
C52	810000430	12	C48	800026296	16	C56	800035982	10		C48	800018269	21					
C54	810000448	12	C50	800026304	16	C58	800035990	10		C50	800018277	21					
C56	810000455	12	C52	800026312	16	C60	800036006	10		C52	800018285	21					
C58	810000463	12	C54	800026320	16	D96	800040453	10		C54	800018293	21					
C60	810000471	12	C56	800026338	16	D100	800040461	10		C56	800018301	21					
C146	810000513	12	C58	800026346	16	D104	800040479	10		C58	800018319	21					
C148	810000521	12	C60	800026353	16	106PB Black	C46	800034068		18	C60	800018327	21				
C150	810000539	12	C44	800026395	16		C48	800034076		18	Navy	C44	800031874	21			
C152	810000547	12	C46	800026403	16	C50	800034084	18		C46		800031882	21				
C154	810000554	12	C48	800026411	16	C52	800034092	18		C48		800031890	21				
C156	810000562	12	C50	800026429	16	C54	800034100	18	C50	800031908		21					
D96	810000604	12	C52	800026437	16	C56	800034118	18	C52	800031916		21					
D100	810000612	12	C54	800026445	16	C58	800034126	18	C54	800031924		21					
D104	810000620	12	C56	800026452	16	C60	800034134	18	C56	800031932		21					
D108	810000638	12	C58	800026460	16	Grey	C46	800034407	18	C58		800031940	21				
D112	810000646	12	C60	800026478	16		C48	800034415	18	C60		800031957	21				
D116	810000653	12	Navy	C44	800026510	16	C50	800034423	18	Black	C44	800032252	21				
Women's 36	810000695	12		C46	800026528	16	C52	800034431	18		C46	800032260	21				
Women's 38	810000703	12		C48	800026536	16	C54	800034449	18		C48	800032278	21				
Women's 40	810000711	12		C50	800026544	16	C56	800034456	18		C50	800032286	21				
Women's 42	810000729	12		C52	800026551	16	C58	800034464	18		C52	800032294	21				
Women's 44	810000737	12		C54	800026569	16	C60	800034472	18		C54	800032302	21				
C44	810000778	12		C56	800026577	16	107B Denim	C44	800026635		21	C56	800032310	21			
C46	810000786	12		C58	800026585	16		C46	800026643		21	C58	800032328	21			
C48	810000794	12		C60	800026593	16	C48	800026650	21		C60	800032336	21				
C50	810000802	12		C44	800033706	16	C50	800026668	21	115B Black	C44	800011983	13				
C52	810000810	12		C46	800033714	16	C52	800026676	21		C46	800011991	13				
C54	810000828	12		C48	800033722	16	C54	800026684	21		C48	800012007	13				
C56	810000836	12		C50	800033730	16	C56	800026692	21		C50	800012015	13				
C58	810000844	12		C52	800033748	16	C58	800026700	21		C52	800012023	13				
C60	810000851	12		C54	800033755	16	C60	800026718	21		C54	800012031	13				
C146	810000893	12		C56	800033763	16	C44	810003210	21		C56	800012049	13				
C148	810000901	12		C58	800033771	16	111B Black	C46	810003228		21	C58	800012056	13			
C150	810000919	12		C60	800033789	16		C48	810003236		21	C60	800012064	13			
C152	810000927	12		Royal	C44	800033821	16	C50	810003244		21	C146	800012106	13			
C154	810000935	12	C46		800033839	16	C52	810003251	21		C148	800012114	13				
C156	810000943	12	C48		800033847	16	C54	810003269	21		C150	800012122	13				
D96	810000984	12	C50		800033854	16	C56	810003277	21	C152	800012130	13					
D100	810000992	12	C52		800033862	16	C58	810003285	21	C154	800012148	13					
D104	810001008	12	C54		800033870	16	C60	810003293	21	C156	800012155	13					
D108	810001016	12	C56		800033888	16	Navy	C44	810003335	21	D96	800012197	13				
D112	810001024	12	C58		800033896	16		C46	810003343	21	D100	800012205	13				
D116	810001032	12	C60		800033904	16		C48	810003350	21	D104	800012213	13				
Women's 36	810001073	12	C44	800033946	16	C50		810003368	21	D108	800012221	13					
Women's 38	810001081	12	C46	800033953	16	C52		810003376	21	D112	800012239	13					
Women's 40	810001099	12	C48	800033961	16	C54		810003384	21	D116	800012247	13					
Women's 42	810001107	12	C50	800033979	16	C56		810003392	21	118P Black	S	800032633	29,83				
Women's 44	810001115	12	C52	800033987	16	C58		810003400	21		M	800032641	29,83				
C44	810001156	12	C54	800033995	16	Grey		C60	810003418	21	L	800032658	29,83				
C46	810001164	12	C56	800034001	16		C44	810004564	21	XL	800032666	29,83					
C48	810001172	12	C58	800034019	16		C46	810004572	21	XXL	800032674	29,83					
C50	810001180	12	C60	800034027	16		C48	810004580	21	XXXL	800032682	29,83					

Model	Size	Art. no.	Page	Model	Size	Art. no.	Page	Model	Size	Art. no.	Page	Model	Size	Art. no.	Page		
120P Grey	XS	800000218	29	130PB Yellow	D108	800015562	24	137PB Yellow	C56	207889239	25	Orange	D116	800003683	24		
	S	800000226	29		D112	800015570	24		C58	207889247	25		C44	800003717	24		
	M	800000234	29		D116	800015588	24		C60	207889254	25		C46	800003725	24		
	L	800000242	29		Women's 36	800015620	24		D96	207889296	25		C48	800003733	24		
	XL	800000259	29		Women's 38	800015638	24		D100	207889304	25		C50	800003741	24		
	XXL	800000267	29		Women's 40	800015646	24		D104	207889312	25		C52	800003758	24		
121B Black	XXXL	800000275	29		Women's 42	800015653	24		D108	207889320	25	C54	800003766	24			
	C44	810004689	20		Women's 44	800015661	24		D112	207889338	25	C56	800003774	24			
	C46	810004697	20		C44	800007817	25		D116	207889346	25	C58	800003782	24			
	C48	810004705	20		C46	800007825	25		C146	207889387	25	C60	800003790	24			
	C50	810004713	20		C48	800007833	25		C148	207889395	25	C146	800003832	24			
	C52	810004721	20		C50	800007841	25		C150	207889403	25	C148	800003840	24			
	C54	810004739	20		C52	800007858	25		C152	207889411	25	C150	800003857	24			
	C56	810004747	20		C54	800007866	25		C154	207889429	25	C152	800003865	24			
	C58	810004754	20		C56	800007874	25		C156	207889437	25	C154	800003873	24			
	C60	810004762	20		C58	800007882	25		Women's 36	800010068	25	C156	800003881	24			
	Women's 36	810004804	20		C60	800007890	25		Women's 38	800010076	25	D96	800003923	24			
	Women's 38	810004812	20		C146	800007932	25		Women's 40	800010084	25	D100	800003931	24			
	Women's 40	810004820	20		C148	800007940	25		Women's 42	800010092	25	D104	800003949	24			
	Women's 42	810004838	20		C150	800007957	25		Women's 44	800010100	25	D108	800003956	24			
	Women's 44	810004846	20		C152	800007965	25		C44	800004004	24	D112	800003964	24			
122PB Yellow	C44	800007197	25		C154	800007973	25		C46	800004012	24	D116	800003972	24			
	C46	800007205	25		C156	800007981	25		C48	800004020	24	140PB Yellow	XS	800004798	27		
	C48	800007213	25		D96	800008021	25		C50	800004038	24		S	800004806	27		
	C50	800007221	25		D100	800008039	25		C52	800004046	24		M	800004814	27		
	C52	800007239	25		D104	800008047	25		C54	800004053	24		L	800004822	27		
	C54	800007247	25		D108	800008054	25		C56	800004061	24		XL	800004830	27		
	C56	800007254	25		D112	800008062	25		C58	800004079	24		XXL	800004848	27		
	C58	800007262	25		D116	800008070	25		C60	800004087	24		XXXL	800004855	27		
	C60	800007270	25	Orange	C44	800008104	25	C146	800004129	24	Orange	XS	800004897	27			
	C62	800007288	25		C46	800008112	25	C148	800004137	24		S	800004905	27			
	C64	800007296	25		C48	800008120	25	C150	800004145	24		M	800004913	27			
	C44	800007320	25		C50	800008138	25	C152	800004152	24		L	800004921	27			
	C46	800007338	25		C52	800008146	25	C154	800004160	24		XL	800004939	27			
	C48	800007346	25		C54	800008153	25	C156	800004178	24		XXL	800004947	27			
	C50	800007353	25		C56	800008161	25	D96	800004210	24		XXXL	800004954	27			
	C52	800007361	25		C58	800008179	25	D100	800004228	24	141PB Black	C44	207887225	20			
	C54	800007379	25		C60	800008187	25	D104	800004236	24		C46	207887233	20			
	C56	800007387	25		C146	800008229	25	D108	800004244	24		C48	207887241	20			
	C58	800007395	25		C148	800008237	25	D112	800004251	24		C50	207887258	20			
	C60	800007403	25		C150	800008245	25	D116	800004269	24		C52	207887266	20			
	C62	800007411	25		C152	800008252	25	137PB Orange	C44	800004293		24	C54	207887274	20		
	C64	800007429	25		C154	800008260	25		C46	800004301		24	C56	207887282	20		
123P Black	XS	800005399	29		C156	800008278	25		C48	800004319		24	C58	207887290	20		
	S	800005407	29		D96	800008310	25		C50	800004327		24	C60	207887308	20		
	M	800005415	29		D100	800008328	25		C52	800004335		24	142PB Blue	C44	207702671	20	
	L	800005423	29		D104	800008336	25		C54	800004343		24		C46	207702689	20	
	XL	800005431	29		D108	800008344	25		C56	800004350		24		chequered	C48	207702697	20
	XXL	800005449	29		D112	800008351	25		C58	800004368		24		C50	207702705	20	
	XXXL	800005456	29		D116	800008369	25		C60	800004376		24		C52	207702713	20	
124B Black	C44	800015125	24	136PB Yellow	C44	207888884	25		C146	800004418		24		C54	207702721	20	
	C46	800015133	24		C46	207888892	25		C148	800004426		24	C56	207702739	20		
	C48	800015141	24		C48	207888900	25		C150	800004434		24	C58	207702747	20		
	C50	800015158	24		C50	207888918	25		C152	800004442		24	C60	207702754	20		
	C52	800015166	24		C52	207888926	25		C154	800004459	24	143PB Blue chequered	C44	207703257	20		
	C54	800015174	24		C54	207888934	25		C156	800004467	24		C46	207703265	20		
	C56	800015182	24		C56	207888942	25		D96	800004509	24		C48	207703273	20		
	C58	800015190	24		C58	207888959	25		D100	800004517	24		C50	207703281	20		
	C60	800015208	24		C60	207888967	25		D104	800004525	24		C52	207703299	20		
	D96	800015240	24		D96	207889007	25		D108	800004533	24		C54	207703307	20		
	D100	800015257	24		D100	207889015	25		D112	800004541	24		C56	207703315	20		
	D104	800015265	24		D104	207889023	25		D116	800004558	24		C58	207703323	20		
	D108	800015273	24		D108	207889031	25	138PB Yellow	C44	800003428	24		C60	207703331	20		
	D112	800015281	24		D112	207889049	25		C46	800003436	24		Women's 36	207703463	20		
	D116	800015299	24		D116	207889056	25		C48	800003444	24		Women's 38	207703471	20		
	Women's 36	800015331	24		C146	207889098	25		C50	800003451	24		Women's 40	207703489	20		
	Women's 38	800015349	24		C148	207889106	25		C52	800003469	24		Women's 42	207703497	20		
	Women's 40	800015356	24		C150	207889114	25		C54	800003477	24		Women's 44	207703505	20		
	Women's 42	800015364	24		C152	207889122	25		C56	800003485	24	148B Khaki	C44	800018384	21		
	Women's 44	800015372	24		C154	207889130	25		C58	800003493	24		C46	800018392	21		
	Navy	C44	800015414		24	C156	207889148		25	C60	800003501		24	C48	800018400	21	
		C46	800015422		24	Women's 36	800009987		25	C146	800003543		24	C50	800018418	21	
		C48	800015430		24	Women's 38	800009995		25	C148	800003550		24	C52	800018426	21	
		C50	800015448		24	Women's 40	800010001		25	C150	800003568		24	C54	800018434	21	
		C52	800015455		24	Women's 42	800010019		25	C152	800003576		24	C56	800018442	21	
		C54	800015463		24	Women's 44	800010027		25	C154	800003584		24	C58	800018459	21	
C56		800015471	24	Orange	C44	207889171	25		C156	800003592	24		C60	800018467	21		
C58		800015489	24		C46	207889189	25		D96	800003634	24	Navy	C44	800031999	21		
C60		800015497	24		C48	207889197	25	D100	800003642	24	C46	800032005	21				
D96		800015539	24		C50	207889205	25	D104	800003659	24	C48	800032013	21				
D100		800015547	24		C52	207889213	25	D108	800003667	24	C50	800032021	21				
D104		800015554	24		C54	207889221	25	D112	800003675	24	C52	800032039	21				



Model	Size	Art. no.	Page	Model	Size	Art. no.	Page	Model	Size	Art. no.	Page	Model	Size	Art. no.	Page
Black	C54	800032047	21	Black	C46	800029308	19	Black	C52	810004226	18	Black	C150	207821901	18
	C56	800032054	21		C48	800029316	19		C54	810004234	18		C152	207821919	18
	C58	800032062	21		C50	800029324	19		C56	810004242	18		C154	207821927	18
	C60	800032070	21		C52	800029332	19		C58	810004259	18		C156	207821935	18
	C44	800032377	21		C54	800029340	19		C60	810004267	18		D96	207821943	18
	C46	800032385	21		C56	800029357	19		C146	810004309	18		D100	207821950	18
	C48	800032393	21		C58	800029365	19		C148	810004317	18		D104	207821968	18
	C50	800032401	21		C60	800029373	19		C150	810004325	18		D108	207821976	18
	C52	800032419	21		C146	800029407	19		C152	810004333	18		D112	207821984	18
	C54	800032427	21		C148	800029415	19		C154	810004341	18		D116	207821992	18
149P Yellow	C56	800032435	21	151B Black	C150	800029423	19	151PB Black	C156	810004358	18	157P Black	Women's 36	207822008	18
	C58	800032443	21		C152	800029431	19		D96	810004390	18		Women's 38	207822016	18
	C60	800032450	21		C154	800029449	19		D100	810004408	18		Women's 40	207822024	18
	XS	800034837	27		C156	800029456	19		D104	810004416	18		Women's 42	207822032	18
	S	800034845	27		D96	800029480	19		D108	810004424	18		Women's 44	207822040	18
	M	800034852	27		D100	800029498	19		D112	810004432	18		XS	800002487	29
	L	800034860	27		D104	800029506	19		D116	810004440	18		S	800002495	29
	XL	800034878	27		D108	800029514	19		Women's 36	810004481	18		M	800002503	29
	XXL	800034886	27		D112	800029522	19		Women's 38	810004499	18		L	800002511	29
	XXXL	800034894	27		D116	800029530	19		Women's 40	810004507	18		XL	800002529	29
Orange	XS	800034936	27	150PB Black	D120	800029548	19	151PB Black	Women's 42	810004515	18	158PB Black	XXL	800002537	29
	S	800034944	27		Women's 36	800029571	19		Women's 44	810004523	18		XXXL	800002545	29
	M	800034951	27		Women's 38	800029589	19		C44	207820051	18		C44	800029647	19
	L	800034969	27		Women's 40	800029597	19		C46	207820069	18		C46	800029654	19
	XL	800034977	27		Women's 42	800029605	19		C48	207820077	18		C48	800029662	19
	XXL	800034985	27		Women's 44	800029613	19		C50	207820085	18		C50	800029670	19
	XXXL	800034993	27		C44	810003459	18		C52	207820093	18		C52	800029688	19
	C44	800028599	19		C46	810003467	18		C54	207820101	18		C54	800029696	19
	C46	800028607	19		C48	810003475	18		C56	207820119	18		C56	800029704	19
	C48	800028615	19		C50	810003483	18		C58	207820127	18		C58	800029712	19
Grey	C50	800028623	19	Grey	C52	810003491	18	Grey	C60	207820135	18	Grey	C60	800029720	19
	C52	800028631	19		C54	810003509	18		C148	207820176	18		C44	800029928	19
	C54	800028649	19		C56	810003517	18		C150	207820184	18		C46	800029936	19
	C56	800028656	19		C58	810003525	18		C152	207820192	18		C48	800029944	19
	C58	800028664	19		C60	810003533	18		C154	207820200	18		C50	800029951	19
	C60	800028672	19		C146	810003582	18		C156	207820218	18		C52	800029969	19
	C146	800028706	19		C148	810003590	18		D96	207821000	18		C54	800029977	19
	C148	800028714	19		C150	810003608	18		D100	207821018	18		C56	800029985	19
	C150	800028722	19		C152	810003616	18		D104	207821026	18		C58	800029993	19
	C152	800028730	19		C154	810003624	18		D108	207821034	18	C60	800030009	19	
Grey	C154	800028748	19	Grey	C156	810003632	18	Grey	D112	207821042	18	Navy	C44	800030207	19
	C156	800028755	19		D96	810003673	18		D116	207821059	18		C46	800030215	19
	D96	800028789	19		D100	810003681	18		Women's 36	207821208	18		C48	800030223	19
	D100	800028797	19		D104	810003699	18		Women's 38	207821216	18		C50	800030231	19
	D104	800028805	19		D108	810003707	18		Women's 40	207821224	18		C52	800030249	19
	D108	800028813	19		D112	810003715	18		Women's 42	207821232	18		C54	800030256	19
	D112	800028821	19		D116	810003723	18		Women's 44	207821240	18		C56	800030264	19
	D116	800028839	19		Women's 36	810003764	18		C44	207821307	18		C58	800030272	19
	D120	800028847	19		Women's 38	810003772	18		C46	207821315	18		C60	800030280	19
	Women's 36	800028870	19		Women's 40	810003780	18		C48	207821323	18	Red	C44	800030488	19
Women's 38	800028888	19	Women's 42	810003798	18	C50	207821331	18	C46	800030496	19				
Women's 40	800028896	19	Women's 44	810003806	18	C52	207821349	18	C48	800030504	19				
Women's 42	800028904	19	C44	810003848	18	C54	207821356	18	C50	800030512	19				
Women's 44	800028912	19	C46	810003855	18	C56	207821364	18	C52	800030520	19				
C44	800028946	19	C48	810003863	18	C58	207821372	18	C54	800030538	19				
C46	800028953	19	C50	810003871	18	C60	207821380	18	C56	800030546	19				
C48	800028961	19	C52	810003889	18	C148	207821398	18	C58	800030553	19				
C50	800028979	19	C54	810003897	18	C150	207821406	18	C60	800030561	19				
Navy	C52	800028987	19	Navy	C56	810003905	18	Navy	C152	207821414	18	161PB Navy	C44	800030769	19
	C54	800028995	19		C58	810003913	18		C154	207821422	18		C46	800030777	19
	C56	800029001	19		C60	810003921	18		C156	207821430	18		C48	800030785	19
	C58	800029019	19		C146	810003962	18		D96	207821448	18		C50	800030793	19
	C60	800029027	19		C148	810003970	18		D100	207821455	18		C52	800030801	19
	C146	800029050	19		C150	810003988	18		D104	207821463	18		C54	800030819	19
	C148	800029068	19		C152	810003996	18		D108	207821471	18		C56	800030827	19
	C150	800029076	19		C154	810004002	18		D112	207821489	18		C58	800030835	19
	C152	800029084	19		C156	810004010	18		D116	207821497	18		C60	800030843	19
	C154	800029092	19		D96	810004051	18		Women's 36	207821505	18	161PB Navy	C44	207700956	14
C156	800029100	19	D100	810004069	18	Women's 38	207821513	18	C46	207700964	14				
D96	800029134	19	D104	810004077	18	Women's 40	207821521	18	C48	207700972	14				
D100	800029142	19	D108	810004085	18	Women's 42	207821539	18	C50	207700980	14				
D104	800029159	19	D112	810004093	18	Women's 44	207821547	18	C52	207700998	14				
D108	800029167	19	D116	810004101	18	C44	207821802	18	C54	207701004	14				
D112	800029175	19	Women's 36	810004135	18	C46	207821810	18	C56	207701012	14				
D116	800029183	19	Women's 38	810004143	18	C48	207821828	18	C58	207701020	14				
D120	800029191	19	Women's 40	810004150	18	C50	207821836	18	C60	207701038	14				
Women's 36	800029225	19	Navy	Women's 42	810004168	18	C52	207821844	18	C146	207701079	14			
Women's 38	800029233	19		Women's 44	810004176	18	C54	207821851	18	C148	207701087	14			
Women's 40	800029241	19	Navy	C44	810004184	18	C56	207821869	18	C150	207701095	14			
Women's 42	800029258	19		C46	810004192	18	C58	207821877	18	C152	207701103	14			
Women's 44	800029266	19	C48	810004200	18	C60	207821885	18	C154	207701111	14				
C44	800029290	19	C50	810004218	18	C148	207821893	18	C156	207701129	14				

Model	Size	Art. no.	Page	Model	Size	Art. no.	Page	Model	Size	Art. no.	Page	Model	Size	Art. no.	Page
Black	D96	207701160	14	All black	D112	800000663	14	Grey	Women's 40	207701350	17	Khaki	C46	800018533	15
	D100	207701178	14		D116	800000671	14		Women's 42	207701368	17		C48	800018541	15
	D104	207701186	14		Women's 36	800000713	14		Women's 44	207701376	17		C50	800018558	15
	D108	207701194	14		Women's 38	800000721	14		C44	207887969	17		C52	800018566	15
	D112	207701202	14		Women's 40	800000739	14		C46	207887977	17		C54	800018574	15
	D116	207701210	14		Women's 42	800000747	14		C48	207887985	17		C56	800018582	15
	Women's 36	207701251	14		Women's 44	800000754	14		C50	207887993	17	C58	800018590	15	
	Women's 38	207701269	14		C44	800013880	14		C52	207888009	17	C60	800018608	15	
	Women's 40	207701277	14		C46	800013898	14		C54	207888017	17	C62	800018616	15	
	Women's 42	207701285	14		C48	800013906	14		C56	207888025	17	C64	800018624	15	
	Women's 44	207701293	14		C50	800013914	14		C58	207888033	17	C44	800032112	15	
	C44	207886540	14		C52	800013922	14		C60	207888041	17	C46	800032120	15	
	C46	207886557	14		C54	800013930	14	C146	207888082	17	C48	800032138	15		
	C48	207886565	14		C56	800013948	14	C148	207888090	17	C50	800032146	15		
	C50	207886573	14		C58	800013955	14	C150	207888108	17	C52	800032153	15		
	C52	207886581	14		C60	800013963	14	C152	207888116	17	C54	800032161	15		
	C54	207886599	14		C146	800014003	14	C154	207888124	17	C56	800032179	15		
	C56	207886607	14		C148	800014011	14	C156	207888132	17	C58	800032187	15		
	C58	207886615	14		C150	800014029	14	D96	207888173	17	C60	800032195	15		
	C60	207886623	14		C152	800014037	14	D100	207888181	17	C62	800032203	15		
	C146	207886664	14		C154	800014045	14	D104	207888199	17	C64	800032211	15		
	C148	207886672	14		C156	800014052	14	D108	207888207	17	C44	800032492	15		
	C150	207886680	14		D96	800014094	14	D112	207888215	17	C46	800032500	15		
	C152	207886698	14		D100	800014102	14	D116	207888223	17	C48	800032518	15		
	C154	207886706	14		D104	800014110	14	Women's 36	207888264	17	C50	800032526	15		
	C156	207886714	14		D108	800014128	14	Women's 38	207888272	17	C52	800032534	15		
	D96	207886755	14		D112	800014136	14	Women's 40	207888280	17	C54	800032542	15		
	D100	207886763	14		D116	800014144	14	Women's 42	207888298	17	C56	800032559	15		
	D104	207886771	14		Women's 36	800014185	14	Women's 44	207888306	17	C58	800032567	15		
	D108	207886789	14		Women's 38	800014193	14	Blue chequered	C44	800001422	17	C60	800032575	15	
	D112	207886797	14		Women's 40	800014201	14		C46	800001430	17	C62	800032583	15	
	D116	207886805	14		Women's 42	800014219	14		C48	800001448	17	C64	800032591	15	
	Women's 36	207700493	14		Women's 44	800014227	14		C50	800001455	17	171PB Black	C44	207891805	16
	Women's 38	207700501	14		C44	207701798	17		C52	800001463	17		C46	207891813	16
	Women's 40	207700519	14		C46	207701806	17		C54	800001471	17		C48	207891821	16
	Women's 42	207700527	14		C48	207701814	17		C56	800001489	17		C50	207891839	16
Women's 44	207700535	14	C50	207701822	17	C58	800001497		17	C52	207891847		16		
C44	207886847	14	C52	207701830	17	C60	800001505		17	C54	207891854		16		
C46	207886854	14	C54	207701848	17	C146	800001547		17	C56	207891862		16		
C48	207886862	14	C56	207701855	17	C148	800001554		17	C58	207891870		16		
C50	207886870	14	C58	207701863	17	C150	800001562		17	C60	207891888		16		
C52	207886888	14	C60	207701871	17	C152	800001570	17	C146	207891938	16				
C54	207886896	14	C146	207701913	17	C154	800001588	17	C148	207891946	16				
C56	207886904	14	C148	207701921	17	C156	800001596	17	C150	207891953	16				
C58	207886912	14	C150	207701939	17	D96	800001638	17	C152	207891961	16				
C60	207886920	14	C152	207701947	17	D100	800001646	17	C154	207891979	16				
C146	207886961	14	C154	207701954	17	D104	800001653	17	C156	207891987	16				
C148	207886979	14	C156	207701962	17	D108	800001661	17	D96	207892035	16				
C150	207886987	14	D96	207702002	17	D112	800001679	17	D100	207892043	16				
C152	207886995	14	D100	207702010	17	D116	800001687	17	D104	207892050	16				
C154	207887001	14	D104	207702028	17	Women's 36	800001729	17	D108	207892068	16				
C156	207887019	14	D108	207702036	17	Women's 38	800001737	17	D112	207892076	16				
D96	207887050	14	D112	207702044	17	Women's 40	800001745	17	D116	207892084	16				
D100	207887068	14	D116	207702051	17	Women's 42	800001752	17	Women's 36	207892134	16				
D104	207887076	14	Women's 36	207702093	17	Women's 44	800001760	17	Women's 38	207892142	16				
D108	207887084	14	Women's 38	207702101	17	C44	800014268	17	Women's 40	207892159	16				
D112	207887092	14	Women's 40	207702119	17	C46	800014276	17	Women's 42	207892167	16				
D116	207887100	14	Women's 42	207702127	17	C48	800014284	17	Women's 44	207892175	16				
Women's 36	207887142	14	Women's 44	207702135	17	C50	800014292	17	C44	207892225	16				
Women's 38	207887159	14	Black	C44	207887662	17	C52	800014300	17	C46	207892233	16			
Women's 40	207887167	14		C46	207887670	17	C54	800014318	17	C48	207892241	16			
Women's 42	207887175	14		C48	207887688	17	C56	800014326	17	C50	207892258	16			
Women's 44	207887183	14		C50	207887696	17	C58	800014334	17	C52	207892266	16			
C44	800000416	14		C52	207887704	17	C60	800014342	17	C54	207892274	16			
C46	800000424	14		C54	207887712	17	C146	800014383	17	C56	207892282	16			
C48	800000432	14		C56	207887720	17	C148	800014391	17	C58	207892290	16			
C50	800000440	14		C58	207887738	17	C150	800014409	17	C60	207892308	16			
C52	800000457	14		C60	207887746	17	C152	800014417	17	C146	207892357	16			
C54	800000465	14		C146	207887787	17	C154	800014425	17	C148	207892365	16			
C56	800000473	14		C148	207887795	17	C156	800014433	17	C150	207892373	16			
C58	800000481	14		C150	207887803	17	D96	800014474	17	C152	207892381	16			
C60	800000499	14	C152	207887811	17	D100	800014482	17	C154	207892399	16				
C146	800000531	14	C154	207887829	17	D104	800014490	17	C156	207892407	16				
C148	800000549	14	C156	207887837	17	D108	800014508	17	D96	207892456	16				
C150	800000556	14	D96	207887878	17	D112	800014516	17	D100	207892464	16				
C152	800000564	14	D100	207887886	17	D116	800014524	17	D104	207892472	16				
C154	800000572	14	D104	207887894	17	Women's 36	800014565	17	D108	207892480	16				
C156	800000580	14	D108	207887902	17	Women's 38	800014573	17	D112	207892498	16				
D96	800000622	14	D112	207887910	17	Women's 40	800014581	17	D116	207892506	16				
D100	800000630	14	D116	207887928	17	Women's 42	800014599	17	Women's 36	207892555	16				
D104	800000648	14	Women's 36	207701335	17	Women's 44	800014607	17	Women's 38	207892563	16				
D108	800000655	14	Women's 38	207701343	17	164B	C44	800018525	15	Women's 40	207892571	16			

Model	Size	Art. no.	Page	Model	Size	Art. no.	Page	Model	Size	Art. no.	Page	Model	Size	Art. no.	Page	
Navy	Women's 42	207892589	16	195B Black	XL	207919044	23	220P	XS	800000010	37	266B Black	XXL	800008732	49	
	Women's 44	207892597	16		XXL	207919051	23	Grey/black	S	800000028	37		XXXL	800008740	49	
	C44	207892647	16		XXXL	207919069	23	M	800000036	37	XS		800034712	46		
	C46	207892654	16		C46	810002071	22	L	800000044	37	S		800034720	46		
	C48	207892662	16		C48	810002089	22	XL	800000051	37	M		800034738	46		
	C50	207892670	16		C50	810002097	22	XXL	800000069	37	L		800034746	46		
	C52	207892688	16		C52	810002105	22	XXXL	800000077	37	XL		800034753	46		
	C54	207892696	16		C54	810002113	22	Grey/green	XS	800000119	37		XXL	800034761	46	
	C56	207892704	16		C56	810002121	22		S	800000127	37		XXXL	800034779	46	
	C58	207892712	16		C58	810002139	22		M	800000135	37		267P	XS	800016008	45
	C60	207892720	16		C60	810002147	22		L	800000143	37		Black	S	800016016	45
	C146	207892779	16		C62	810002154	22	XL	800000150	37	M		800016024	45		
	C148	207892787	16	202B Black	XS	810002618	34	XXL	800000168	37	L	800016032	45			
	C150	207892795	16		S	810002626	34	XXXL	800000176	37	XL	800016040	45			
	C152	207892803	16		M	810002634	34	230PB Yellow	XS	800007460	42	XXL	800016057	45		
	C154	207892811	16		L	810002642	34		S	800007478	42	XXXL	800016065	45		
C156	207892829	16	XL	810002659	34	M	800007486		42	Navy	XS	800016107	45			
D96	207892878	16	XXL	810002667	34	L	800007494		42		S	800016115	45			
D100	207892886	16	XXXL	810002675	34	XL	800007502	42	M		800016123	45				
D104	207892894	16	Grey	XS	810002717	34	XXL	800007510	42		L	800016131	45			
D108	207892902	16		S	810002725	34	XXXL	800007528	42	XL	800016149	45				
D112	207892910	16		M	810002733	34	Orange	XS	800007569	42	XXL	800016156	45			
D116	207892928	16		L	810002741	34		S	800007577	42	XXXL	800016164	45			
Women's 36	207892977	16	XL	810002758	34	M		800007585	42	268PB Black	XS	800019309	45			
Women's 38	207892985	16	XXL	810002766	34	L		800007593	42		S	800019317	45			
Women's 40	207892993	16	XXXL	810002774	34	XL	800007601	42	M		800019325	45				
Women's 42	207893009	16	Navy	XS	810002816	34	XXL	800007619	42		L	800019333	45			
Women's 44	207893017	16		S	810002824	34	XXXL	800007627	42	XL	800019341	45				
172PB Black	XS	207893488		34	M	810002832	34	233P Yellow	XS	207912296	44	XXL	800019358	45		
	S	207893496		34	L	810002840	34		S	207912304	44	XXXL	800019366	45		
	M	207893504	34	XL	810002857	34	M		207912312	44	XXXXL	800019374	45			
	L	207893512	34	XXL	810002865	34	L		207912320	44	Red	XS	800019416	45		
	XL	207893520	34	XXXL	810002873	34	XL	207912338	44	S		800019424	45			
	XXL	207893538	34	205PB Black	XS	800031049	34	XXL	207912346	44		M	800019432	45		
	XXXL	207893546	34		S	800031056	34	XXXL	207912353	44		L	800019440	45		
	XS	207911595	26		M	800031064	34	Orange	XS	207912395	44	XL	800019457	45		
	S	207911603	26		L	800031072	34		S	207912403	44	XXL	800019465	45		
	M	207911611	26	XL	800031080	34	M		207912411	44	XXXL	800019473	45			
	L	207911629	26	XXL	800031098	34	L		207912429	44	XXXXL	800019481	45			
	XL	207911637	26	Navy	XXXL	800031106	34	XL	207912437	44	Navy	XS	800019523	45		
	XXL	207911645	26		XS	800031130	34	XXL	207912445	44		S	800019531	45		
	XXXL	207911652	26		S	800031148	34	XXXL	207912452	44		M	800019549	45		
	C46/48	810001917	22		M	800031155	34	237PB Yellow	XS	800004590		42	L	800019556	45	
	C50/52	810001925	22	L	800031163	34	S		800004608	42	XL	800019564	45			
C54/56	810001933	22	XL	800031171	34	M	800004616		42	XXL	800019572	45				
C58/60	810001941	22	XXL	800031189	34	L	800004624		42	XXXL	800019580	45				
C62/64	810001958	22	Grey	XXXL	800031197	34	XL	800004632	42	269P Black	XXXXL	800019598	45			
C46/48	810001990	22		XS	800031221	34	XXL	800004640	42		XS	207913542	50			
C50/52	810002006	22		S	800031239	34	XXXL	800004657	42		S	207913559	50			
C54/56	810002014	22		M	800031247	34	Orange	XS	800004699		42	M	207913567	50		
C58/60	810002022	22	L	800031254	34	S		800004707	42	L	207913575	50				
C62/64	810002030	22	XL	800031262	34	M		800004715	42	XL	207913583	50				
C46	207870106	22	XXL	800031270	34	L		800004723	42	XXL	207913591	50				
191B Navy	C48	207870114	22	Royal	XXXL	800031288	34	XL	800004731	42	273P Black	XXXL	207913609	50		
	C50	207870122	22		XS	800031312	34	XXL	800004749	42		XS	800015901	45		
	C52	207870130	22		S	800031320	34	XXXL	800004756	42		S	800015919	45		
	C54	207870148	22		M	800031338	34	238PB Yellow	XS	800004996		44	M	800015927	45	
	C56	207870155	22	L	800031346	34	S		800005001	44	L	800015935	45			
	C58	207870163	22	XL	800031353	34	M		800005019	44	XL	800015943	45			
	C60	207870171	22	XXL	800031361	34	L		800005027	44	XXL	800015950	45			
	C62	207891649	22	XXXL	800031379	34	XL	800005035	44	XXXL	800015968	45				
	192PB Royal	C44	207870015	22	Red	XS	800031403	34	XXL	800005043	44	278P Black	XS	207911694	45	
		C46	207870023	22		S	800031411	34	XXXL	800005050	44		S	207911702	45	
		C48	207870031	22		M	800031429	34	Orange	XS	800005092		44	M	207911710	45
		C50	207870049	22		L	800031437	34		S	800005100		44	L	207911728	45
		C52	207870056	22	XL	800031445	34	M		800005118	44	XL	207911736	45		
		C54	207870064	22	XXL	800031452	34	L		800005126	44	XXL	207911744	45		
		C56	207870072	22	XXXL	800031460	34	XL	800005134	44	XXXL	207911751	45			
		C58	207870080	22	218PB Black	XS	800031494	49	XXL	800005142	44	280P Yellow	XS	207911496	43	
C60		207870098	22	S		800031502	49	XXXL	800005159	44	S		207911504	43		
C62		207891631	22	M		800031510	49	239PB Yellow	XS	800008583	49		M	207911512	43	
XS		207907239	23	L		800031528	49		S	800008591	49		L	207911520	43	
S		207907247	23	XL	800031536	49	M		800008609	49	XL	207911538	43			
M		207907254	23	XXL	800031544	49	L		800008617	49	XXL	207911546	43			
L		207907262	23	XXXL	800031551	49	XL	800008625	49	XXXL	207911553	43				
XL		207907270	23	Grey	XS	800031676	49	XXL	800008633	49	282B Black	XS	810002311	49		
XXL		207907288	23		S	800031684	49	XXXL	800008641	49		S	810002329	49		
XXXL	207907296	23	M		800031692	49	Orange	XS	800008682	49		M	810002337	49		
XS	207919002	23	L		800031700	49		S	800008690	49		L	810002345	49		
S	207919010	23	XL	800031718	49	M		800008708	49	XL	810002352	49				
M	207919028	23	XXL	800031726	49	L		800008716	49	XXL	810002360	49				
L	207919036	23	XXXL	800031734	49	XL	800008724	49	XXXL	810002378	49					

Model	Size	Art. no.	Page	Model	Size	Art. no.	Page	Model	Size	Art. no.	Page	Model	Size	Art. no.	Page	
Grey	XS	810002410	49	302FR Orange	XXXL	800009342	69	408P Yellow	XXL	800025827	69	422P Lime	L	800011611	41	
	S	810002428	49		C44	800005803	19		XXXL	800025835	69		XL	800011629	41	
	M	810002436	49		C46	800005811	19		XS	800026759	42		XXL	800011637	41	
	L	810002444	49		C48	800005829	19		S	800026767	42		XXXL	800011645	41	
	XL	810002451	49		C50	800005837	19		M	800026775	42		XS	800017048	37	
	XXL	810002469	49		C52	800005845	19		L	800026783	42		S	800017055	37	
Navy	XXXL	810002477	49	303FR Orange	C54	800005852	19	Orange	XL	800026791	42	Black	M	800017063	37	
	XS	810002519	49		C56	800005860	19		XXL	800026809	42		L	800017071	37	
	S	810002527	49		C58	800005878	19		XXXL	800026817	42		XL	800017089	37	
	M	810002535	49		C60	800005886	19		XS	800026858	42		XXL	800017097	37	
	L	810002543	49		C62	800005894	19		S	800026866	42		XXXL	800017105	37	
	XL	810002550	49		C64	800005902	19		M	800026874	42		XS	800017147	37	
282P Yellow/orange	XXL	810002568	49	303FR Orange	C66	800005910	19	410P Yellow	L	800026882	42	430P Yellow	S	800017154	37	
	XXXL	810002576	49		C68	800005928	19		XL	800026890	42		M	800017162	37	
	L	207880055	51		XS	800006645	31		XXL	800026908	42		L	800017170	37	
	XL	207880063	51		S	800006652	31		XXXL	800026916	42		XL	800017188	37	
	283P Yellow	L	806600476		51	M	800006660		31	XS	800025876		68	XXL	800017196	37
		XL	806600484		51	L	800006678		31	S	800025884		68	XXXL	800017204	37
284P Yellow	XXL	806600492	51	322FR Orange	XL	800006686	31	Orange	M	800025892	68	468PB Yellow	XS	800034514	44,67	
	XS	207894411	68		XXL	800006694	31		L	800025900	68		S	800034522	44,67	
	S	207881038	68		XXXL	800006702	31		XL	800025918	68		M	800034530	44,67	
	M	207881046	68		XS	800005969	34		XXL	800025926	68		L	800034548	44,67	
	L	207881053	68		S	800005977	34		XXXL	800025934	68		XL	800034555	44,67	
	XL	207881061	68		M	800005985	34		XS	800025975	68		XXL	800034563	44,67	
285P Black/yellow	XXL	207881079	68	322FR Orange	L	800005993	34	413P Yellow	S	800025983	68	Orange	XXXL	800034571	44,67	
	XXXL	207881178	68		XL	800006009	34		M	800025991	68		XS	800034613	44	
	XS	800009789	70		XXL	800006017	34		L	800026007	68		S	800034621	44	
	S	800009797	70		XXXL	800006025	34		XL	800026015	68		M	800034639	44	
	M	800009805	70		XS	800006744	48		XXL	800026023	68		L	800034647	44	
	L	800009813	70		S	800006751	48		XXXL	800026031	68		XL	800034654	44	
Black/ orange	XL	800009821	70	323FR Orange	M	800006769	48	413P Yellow	XS	800026072	68	468PB Yellow	XXL	800034662	44	
	XXL	800009839	70		L	800006777	48		S	800026080	68		XXXL	800034670	44	
	XXXL	800009847	70		XL	800006785	48		M	800026098	68		XS	800033482	44	
	XS	800009888	70		XXL	800006793	48		L	800026106	68		S	800033490	44	
	S	800009896	70		XXXL	800006801	48		XL	800026114	68		M	800033508	44	
	M	800009904	70		XS	800006843	48		XXL	800026122	68		L	800033516	44	
287P 289P Yellow	L	800009912	70	324FR Orange	S	800006850	48	Orange	XXXL	800026130	68	Orange	XL	800033524	44	
	XL	800009920	70		M	800006868	48		XS	800026171	68		XXL	800033532	44	
	XXL	800009938	70		L	800006876	48		S	800026189	68		XXXL	800033540	44	
	XXXL	800009946	70		XL	800006884	48		M	800026197	68		XXXXL	800033557	44	
	One size	207909532	51		XXL	800006892	48		L	800026205	68		XS	800033599	44	
	XS	207907320	42		XXXL	800006900	48		XL	800026213	68		S	800033607	44	
Yellow	S	207907338	42	332FR Orange	C44	800006066	23	415P Yellow	XXL	800026221	68	510PR Black	M	800033615	44	
	M	207907346	42		C46	800006074	23		XXXL	800026239	68		L	800033623	44	
	L	207907353	42		C48	800006082	23		XS	800026957	70		XL	800033631	44	
	XL	207907361	42		C50	800006090	23		S	800026965	70		XXL	800033649	44	
	XXL	207907379	42		C52	800006108	23		M	800026973	70		XXXL	800033656	44	
	XXXL	207907387	42		C54	800006116	23		L	800026981	70		XXXXL	800033664	44	
Orange	XS	207909268	42	370P Black	C56	800006124	23	420P Yellow	XL	800026999	70	511N Black	XS	800012288	37	
	S	207909276	42		C58	800006132	23		XXL	800027005	70		S	800012296	37	
	M	207909284	42		C60	800006140	23		XXXL	800027013	70		M	800012304	37	
	L	207909292	42		C62	800006157	23		XS	800027054	70		L	800012312	37	
	XL	207909300	42		C64	800006165	23		S	800027062	70		XL	800012320	37	
	XXL	207909318	42		C66	800006173	23		M	800027070	70		XXL	800012338	37	
291P Yellow	XXXL	207909326	42	380P Black	C68	800006181	23	420P Yellow	L	800027088	70	511N Black	XXXL	800012346	37	
	XS	207909359	69		S	800032724	30		XL	800027096	70		XS	800012387	29	
	S	207909367	69		M	800032732	30		XXL	800027104	70		S	800012395	29	
	M	207909375	69		L	800032740	30		XXXL	800027112	70		M	800012403	29	
	L	207909383	69		XL	800032757	30		XS	800011280	41		L	800012411	29	
	XL	207909391	69		XXL	800032765	30		S	800011298	41		XL	800012429	29	
297P Yellow	XXL	207909409	69	403P Orange	S	800032807	43	Orange	M	800011306	41	520P Black	XXL	800012437	29	
	XXXL	207909417	69		M	800032815	43		L	800011314	41		XXXL	800012445	29	
	XS	800009581	70		L	800032823	43		XL	800011322	41		S	800011694	40	
	S	800009599	70		XL	800032831	43		XXL	800011330	41		M	800011702	40	
	M	800009607	70		XXL	800032849	43		XXXL	800011348	41		L	800011710	40	
	L	800009615	70		XS/3 years	207902982	51		XS	800011488	41		XL	800011728	40	
Orange	XL	800009623	70	S/6 years	207902990	51	S	800011496	41	XXL	800011736	40				
	XXL	800009631	70	M/9 years	207903006	51	M	800011504	41	XXXL	800011744	40				
	XXXL	800009649	70	L/12 years	207903014	51	L	800011512	41	XS	800011785	40				
	XS	800009680	70	XL/15 years	207903022	51	XL	800011520	41	S	800011793	40				
	S	800009698	70	XS	800025678	69	XXL	800011538	41	M	800011801	40				
	M	800009706	70	S	800025686	69	XXXL	800011546	41	L	800011819	40				
298P Black/yellow	L	800009714	70	406P Yellow	M	800025694	69	421P Yellow	XS	800011389	41	521P Black	XL	800011827	40	
	XL	800009722	70		L	800025702	69		S	800011397	41		XXL	800011835	40	
	XXL	800009730	70		XL	800025710	69		M	800011405	41		XXXL	800011843	40	
	XXXL	800009748	70		XXL	800025728	69		L	800011413	41		XS	800011884	40	
	XS	800009284	69		XXXL	800025736	69		XL	800011421	41		S	800011892	40	
	S	800009292	69		XS	800025777	69		XXL	800011439	41		M	800011900	40	
298P Black/yellow	M	800009300	69	406P Yellow	S	800025785	69	Orange	XXXL	800011447	41	521P Black	L	800011918	40	
	L	800009318	69		M	800025793	69		XS	800011587	41		XL	800011926	40	
	XL	800009326	69		L	800025801	69		S	800011595	41		XXL	800011934	40	
	XXL	800009334	69		XL	800025819	69		M	800011603	41		XXXL	800011942	40	



Model	Size	Art. no.	Page	Model	Size	Art. no.	Page	Model	Size	Art. no.	Page	Model	Size	Art. no.	Page	
522P Blue	XS	800021701	37	571PP				606B	S	207903832	72	Red/black	XS	800008781	55	
	S	800021719	37	Grey	One size	207887621	90	Black/white	M	207903840	72		S	800008799	55	
	M	800021727	37	576LP					L	207903857	72		M	800008807	55	
	L	800021735	37	Black	One size	207902669	90		XL	207903865	72		L	800008815	55	
	XL	800021743	37	577PG					XXL	207903873	72		XL	800008823	55	
	XXL	800021750	37	Black	One size	207907403	89		XXXL	207903881	72		XXL	800008831	55	
	XXXL	800021768	37	Striped	One size	207907411	89	611P	XS	207915281	56		XXXL	800008849	55	
	XS	800023343	37					Black/white	S	207915299	56					
	S	800023350	37	579PP					M	207915307	56	635B	XS	207915802	56	
	M	800023368	37	Black	One size	800010258	90		L	207915315	56	Black	S	207915810	56	
523P Grey	L	800023376	37	580B	One size	800012825	89		XL	207915323	56		M	207915828	56	
	XL	800023384	37	581B					XXL	207915331	56		L	207915836	56	
	XXL	800023392	37	Black	One size	800016743	89		XXXL	207915349	56		XL	207915844	56	
	XXXL	800023400	37	White	One size	800016750	89	619P	XS	207914789	56		XXL	207915851	56	
	XS	800034308	46	Grey	One size	800016768	89	Black/grey	S	207914797	56		XXXL	207915869	56	
	S	800034316	46	582UA					M	207914805	56		Women's S	207916305	56	
	M	800034324	46	Black	One size	800016776	88		L	207914813	56		Women's M	207916313	56	
	L	800034332	46	Grey	One size	800016784	88		XL	207914821	56		Women's L	207916321	56	
	XL	800034340	46	583UA	One size	800016792	88		XXL	207914839	56		Women's XL	207916339	56	
	XXL	800034357	46	584P					XXXL	207914847	56		Women's XXL	207916347	56	
531P Black/royal	XXXL	800034365	46	Sand	One size	800016800	88	Royal/white	XS	207914888	56	Navy	XS	207916008	56	
	XS	800020877	23	Black	One size	800016818	88		S	207914896	56		S	207916016	56	
	S	800020885	23	585P	One size	800016826	89		M	207914904	56		M	207916024	56	
	M	800020893	23	586	One size	800025637	90		L	207914912	56		L	207916032	56	
	L	800020901	23	588P	One size	207901422	88		XL	207914920	56		XL	207916040	56	
	XL	800020919	23	590L	One size	800020984	89		XXL	207914938	56		XXL	207916057	56	
	XXL	800020927	23	592P	One size	207911454	89		XXXL	207914946	56		XXXL	207916065	56	
	XXXL	800020935	23	593B	S/M	800001174	89	White/grey	XS	207914987	56	637PB	XS	207916479	58	
	XXXXL	800020943	23		M/L	800001182	89		S	207914995	56	Black	S	207916487	58	
	XS	800005498	36	594P	One size	800012783	89		M	207915000	56		M	207916495	58	
548P Grey	S	800005506	36	596A	One size	800025603	88		L	207915018	56		L	207916503	58	
	M	800005514	36	597UA	One size	800025611	88		XL	207915026	56		XL	207916511	58	
	L	800005522	36	598UA	One size	800025629	88		XXL	207915034	56		XXL	207916529	58	
	XL	800005530	36	599B	XS	800024200	83		XXXL	207915042	56		XXXL	207916537	58	
	XXL	800005548	36	Black	S	800024218	83	Black/white	XS	207915083	56	Red	XS	207916578	58	
	XXXL	800005556	36		M	800024226	83		S	207915091	56		S	207916586	58	
	XS	800005597	36		L	800024234	83		M	207915109	56		M	207916594	58	
	S	800005605	36		XL	800024242	83		L	207915117	56		L	207916602	58	
	M	800005613	36		XXL	800024259	83		XL	207915125	56		XL	207916610	58	
	L	800005621	36		XXXL	800024267	83		XXL	207915133	56		XXL	207916628	58	
553P Black/white	XL	800005639	36	600B	XS	207904970	54		XXXL	207915141	56		XXXL	207916636	58	
	XXL	800005647	36	Navy	S	207904988	54	Red/black	XS	207915182	56	Navy	XS	207916677	58	
	XXXL	800005654	36		M	207904996	54		S	207915190	56		S	207916685	58	
	S	207903733	73		L	207905001	54		M	207915208	56		M	207916693	58	
	M	207903741	73		XL	207905019	54		L	207915216	56		L	207916701	58	
	L	207903758	73		XXL	207905027	54		XL	207915224	56		XL	207916719	58	
	XL	207903766	73		XXXL	207905035	54		XXL	207915232	56		XXL	207916727	58	
	XXL	207903774	73	White	XS	207905050	54		XXXL	207915240	56		XXXL	207916735	58	
	XS	207913641	73		S	207905068	54	628B	XS	207910670	59	Royal	XS	207916776	58	
	XXXL	207913658	73		M	207905076	54	Black	S	207910688	59		S	207916784	58	
554P Black	XS	207905381	36		L	207905084	54		M	207910696	59		M	207916792	58	
	S	207905399	36		XL	207905092	54		L	207910704	59		L	207916800	58	
	M	207905407	36		XXL	207905100	54		XL	207910712	59		XL	207916818	58	
	L	207905415	36		XXXL	207905118	54		XXL	207910720	59		XXL	207916826	58	
	XL	207905423	36	Black	XS	207905134	54		XXXL	207910738	59		XXXL	207916834	58	
	XXL	207905431	36		S	207905142	54	White	XS	207910779	59	Grey	XS	207917071	58	
	XXXL	207905449	36		M	207905159	54		S	207910787	59		S	207917089	58	
	Women's S	207915687	36		L	207905167	54		M	207910795	59		M	207917097	58	
	Women's M	207915695	36		XL	207905175	54		L	207910803	59		L	207917105	58	
	Women's L	207915703	36		XXL	207905183	54		XL	207910811	59		XL	207917113	58	
556P White	Women's XL	207915711	36		XXXL	207905191	54		XXL	207910829	59		XXL	207917121	58	
	Women's XXL	207915729	36	Grey	XS	207905217	54		XXXL	207910837	59		XXXL	207917139	58	
	XS	800008401	36		S	207905225	54	632PB	XS	207914680	61	643PB	XS	207918178	60	
	S	800008419	36		M	207905233	54	Black	S	207914698	61	Black	S	207918186	60	
	M	800008427	36		L	207905241	54		M	207914706	61		M	207918194	60	
	L	800008435	36		XL	207905258	54		L	207914714	61		L	207918202	60	
	XL	800008443	36		XXL	207905266	54		XL	207914722	61		XL	207918210	60	
	XXL	800008450	36		XXXL	207905274	54		XXL	207914730	61		XXL	207918228	60	
	XXXL	800008468	36	Red	XS	207905290	54		XXXL	207914748	61		XXXL	207918236	60	
					S	207905308	54	634P	XS	207915380	55	Navy	XS	207918277	60	
562A Black	One size	207914342	88		M	207905316	54	White/black	S	207915398	55		S	207918285	60	
	563A				L	207905324	54		M	207915406	55		M	207918293	60	
	Black	One size	207912494	88		XL	207905332	54		L	207915414	55		L	207918301	60
	Red	One size	207912502	88		XXL	207905340	54		XL	207915422	55		XL	207918319	60
	Yellow	One size	207912510	88		XXXL	207905357	54		XXL	207915430	55		XXL	207918327	60
	564PW	S/M	207913690	88	Royal	XS	207907544	54	Black/white	XS	207915489	55		XXXL	207918335	60
	Chequered	L/XL	207913708	88		S	207907551	54		S	207915497	55	Royal	XS	800016545	60
	566A					M	207907569	54		M	207915505	55		S	800016552	60
	Black	One size	207919960	88		L	207907577	54		L	207915513	55		M	800016560	60
	Grey	One size	207919978	88		XL	207907585	54		XL	207915521	55		L	800016578	60
568P Black					XXL	207907593	54		XXL	207915539	55		XL	800016586	60	
	One size	800034274	90		XXXL	207907601	54		XXXL	207915547	55		XXL	800016594	60	

Model	Size	Art. no.	Page	Model	Size	Art. no.	Page	Model	Size	Art. no.	Page	Model	Size	Art. no.	Page	
Grey	XXXL	800016602	60	664UA	L	800024432	63	681PB	XS	800022543	75	686B	XL	800025249	71	
	XS	800016644	60		XL	800024440	63		Black	S	800022550		75	XXL	800025256	71
	S	800016651	60		XXL	800024457	63		M	800022568	75		XXXL	800025264	71	
	M	800016669	60		XXXL	800024465	63		L	800022576	75		XS	800031775	71	
	L	800016677	60		XS	800024606	61		XL	800022584	75		S	800031783	71	
648B	XL	800016685	60	Grey	S	800024614	61	Navy	XXL	800022592	75	Blue	M	800031791	71	
	XXL	800016693	60		M	800024622	61		XXXL	800022600	75		L	800031809	71	
	XXXL	800016701	60		L	800024630	61		XXXXL	800022618	75		XL	800031817	71	
	XS	800034175	73		XL	800024648	61		XS	800022659	75		XXL	800031825	71	
	S	800034183	73		XXL	800024655	61		S	800022667	75		XXXL	800031833	71	
Red/blue	M	800034191	73	675B	XXXL	800024663	61	Grey	M	800022675	75	687P	XS	800024101	36	
	L	800034209	73		S	800021800	55		L	800022683	75		S	800024119	36	
	XL	800034217	73		M	800021818	55		XL	800022691	75		M	800024127	36	
	XXL	800034225	73		L	800021826	55		XXL	800022709	75		L	800024135	36	
	XXXL	800034233	73		XL	800021834	55		XXXL	800022717	75		XL	800024143	36	
654PB	XS	800027997	62	676B	XXL	800021842	55	Black	XXXXL	800022725	75	705FR	XXL	800024150	36	
	S	800028003	62		XS	800032880	59		XS	800022766	75		XXXL	800024168	36	
	M	800028011	62		S	800032898	59		S	800022774	75		XS	207913005	79	
	L	800028029	62		M	800032906	59		M	800022782	75		S	207913013	79	
	XL	800028037	62		L	800032914	59		L	800022790	75		M	207913021	79	
Navy	XXL	800028045	62	Blue	XL	800032922	59	682B	XL	800022808	75	Black	L	207913039	79	
	XXXL	800028052	62		XXL	800032930	59		XXL	800022816	75		XL	207913047	79	
	XS	800028094	62		XXXL	800032948	59		XXXL	800022824	75		XXL	207913054	79	
	S	800028102	62		XS	800032989	59		XXXXL	800022832	75		XXXL	207913062	79	
	M	800028110	62		S	800032997	59		XS	800022212	74		XS	207913104	79	
Grey	L	800028128	62	678B	M	800033003	59	Black	S	800022220	74	Black	S	207913112	79	
	XL	800028136	62		L	800033011	59		M	800022238	74		M	207913120	79	
	XXL	800028144	62		XL	800033029	59		L	800022246	74		L	207913138	79	
	XXXL	800028151	62		XXL	800033037	59		XL	800022253	74		XL	207913146	79	
	XS	800028193	62		XXXL	800033045	59		XXL	800022261	74		XXL	207913153	79	
656PB	S	800028201	62	Blue	XS	800033086	57	Navy	XXXL	800022279	74	707FR	XXXL	207913161	79	
	M	800028219	62		S	800033094	57		XXXXL	800022287	74		XS	207913203	78	
	L	800028227	62		M	800033102	57		XS	800022329	74		S	207913211	78	
	XL	800028235	62		L	800033110	57		S	800022337	74		M	207913229	78	
	XXL	800028243	62		XL	800033128	57		M	800022345	74		L	207913237	78	
Black	XXXL	800028250	62	Red	XXL	800033136	57	Grey	L	800022352	74	708FR	XL	207913245	78	
	XS	800028292	62		XXXL	800033144	57		XL	800022360	74		XXL	207913252	78	
	S	800028300	62		XS	800033185	57		XXL	800022378	74		XXXL	207913260	78	
	M	800028318	62		S	800033193	57		XXXL	800022386	74		XS	207913302	79	
	L	800028326	62		M	800033201	57		XXXXL	800022394	74		S	207913310	79	
656PB	XL	800028334	62	White	L	800033219	57	Black	XS	800022436	74	709FR	M	207913328	79	
	XXL	800028342	62		XL	800033227	57		S	800022444	74		L	207913336	79	
	XXXL	800028359	62		XXL	800033235	57		M	800022451	74		XL	207913344	79	
	XS	800028391	62		XXXL	800033243	57		L	800022469	74		XXL	207913351	79	
	S	800028409	62		XS	800033284	57		XL	800022477	74		XXXL	207913369	79	
Grey	M	800028417	62	679B	S	800033292	57	Black	XXL	800022485	74	712UP	One size	207913401	78	
	L	800028425	62		M	800033300	57		XXXL	800022493	74		XS	800023640	82	
	XL	800028433	62		L	800033318	57		XXXXL	800022501	74		S	800023657	82	
	XXL	800028441	62		XL	800033326	57		XS	800022873	74		M	800023665	82	
	XXXL	800028458	62		XXL	800033334	57		M	800022881	74		L	800023673	82	
662PB	XS	800028490	62	Black	XXXL	800033342	57	683PB	S	800022899	74	Grey	XL	800023681	82	
	S	800028508	62		XS	800033383	55		L	800022907	74		XL	800023699	82	
	M	800028516	62		S	800033391	55		XL	800022915	74		XXL	800023707	82	
	L	800028524	62		M	800033409	55		XXL	800022923	74		XXXL	800023743	79	
	XL	800028532	62		L	800033417	55		XXXL	800022931	74		XS	207913449	78	
White	XXL	800028540	62	680B	XL	800033425	55	Grey	XXXXL	800022949	74	713FR	S	207913450	79	
	XXXL	800028557	62		XXL	800033433	55		XS	800022980	74		M	207913468	79	
	XS	800025306	63		XXXL	800033441	55		S	800022998	74		L	207913476	79	
	S	800025314	63		XS	800021883	75		M	800023004	74		XL	207913484	79	
	M	800025322	63		S	800021891	75		L	800023012	74		XXL	207913492	79	
663PB	L	800025330	63	Black	M	800021909	75	Black	XL	800023020	74	714FR	XXXL	207913500	79	
	XL	800025348	63		L	800021917	75		XXL	800023038	74		XS	207914383	78	
	XXL	800025355	63		XL	800021925	75		XXXL	800023046	74		S	207914391	78	
	XXXL	800025363	63		XXL	800021933	75		XXXXL	800023053	74		M	207914409	78	
	XS	800024309	63		XXXL	800021941	75		XS	800023095	74		L	207914417	78	
Navy	S	800024317	63	Navy	XXXXL	800021958	75	Chequered	S	800023103	74	Grey	XL	207914425	78	
	M	800024325	63		XS	800021990	75		M	800023111	74		XXL	207914433	78	
	L	800024333	63		S	800022006	75		L	800023129	74		XXXL	207914441	78	
	XL	800024341	63		M	800022014	75		XL	800023137	74		XS	207914482	78	
	XXL	800024358	63		L	800022022	75		XXL	800023145	74		S	207914490	78	
Mottled grey	XXXL	800024366	63	Grey	XL	800022030	75	684B	XXXL	800023152	74	715FR	M	207914508	78	
	XS	800024507	63		XXL	800022048	75		XXXXL	800023160	74		L	207914516	78	
	S	800024515	63		XXXL	800022055	75		XS	800025108	72		XL	207914524	78	
	M	800024523	63		XXXXL	800022063	75		S	800025116	72		XXL	207914532	78	
	L	800024531	63		XS	800022105	75		M	800025124	72		XXXL	207914540	78	
666PB	XL	800024549	63	Grey	S	800022113	75	Denim	L	800025132	72	716UP	XS	800023749	82	
	XXL	800024556	63		M	800022121	75		XL	800025140	72		S	800023756	82	
	XXXL	800024564	63		L	800022139	75		XXL	800025157	72		M	800023764	82	
	XS	800024408	63		XL	800022147	75		XXXL	800025165	72		L	800023772	82	
	S	800024416	63		XXL	800022154	75		S	800025215	71		XL	800023780	82	
668PB	M	800024424	63	Grey	XXXL	800022162	75	Black	M	800025223	71	717UP	XXL	800023798	82	
					XXXXL	800022170	75		L	800025231	71		XXXL	800023806	82	

99 

# MODEL OVERVIEW

Model	Page	Model	Page	Model	Page	Model	Page	Model	Page
101B	12	195B	22	413P	68	597UA	88	716UP	82
103B	16	202B	34	415P	70	598UA	88	717UP	82
105PB	10	205PB	34	420P	41	599B	83	718UP	82
106PB	18	218PB	49	421P	41	600B	54	723P	35
107B	21	220P	37	422P	37	606B	72	724P	50
111B	21	230PB	42	430P	44, 67	611P	56	725P	35
112PB	25	233P	44	468PB	44	619P	56	730P	83
113B	21	237PB	42	510PR	37	628B	59	731PBA	89
115B	13	238PB	44	511N	29	632PB	61	740U	85
118P	29, 83	239PB	49	520P	40	634P	55	741U	85
120P	29	266B	46	521P	40	635B	56	742U	85
121B	20	267P	45	522P	37	637PB	58	743CU	85
122PB	25	268PB	45	523P	46	643PB	60	744C	84
123P	29	269P	50	531P	23	648B	73	745C	84
124B	24	273P	45	548P	36	654PB	62	746C	84
130PB	25	278P	45	553P	73	656PB	62	747U	84
136PB	25	280P	43	554P	36	662PB	63	748B	84
137PB	24	282B	49	556P	36	663PB	63	749B	84
138PB	24	282P	51	562A	88	664UA	61	750U	85
140PB	27	283P	51	563A	88	675B	55	903 Hi-Vis	43, 48
141PB	20	284P	68	564PW	88	676B	59	903PU	48
142PB	20	285P	70	566A	88	678B	57	904PU	48
143PB	20	285P	70	568P	90	679B	55	905P	43
148B	21	287P	51	571PP	90	680B	75	930 Hi-Vis	27
149P	27	289P	42	576LP	90	681PB	75	930PU	31
150PB	19	291P	69	577PG	89	682B	74	931P	26
151B	18	297P	70	579PP	90	683PB	74	940 Hi-Vis	27
151PB	18	298P	69	580B	89	684B	72	940PU	31
157P	29	302FR	19	581B	89	685B	71	980PU	31
158PB	19	303FR	31	582UA	88	686B	71	981PU	89
161PB	14	322FR	34	583UA	88	687P	36	982PU	90
162PB	17	323FR	48	584P	88	705FR	79	983PVC	90
164B	15	324FR	48	585P	89	706FR	79	990PU	23
171PB	16	332FR	23	586	90	707FR	78	Helmet hood knitted blue	89
172PB	34	370P	30	588P	88	708FR	79	Helmet hood long black	89
177P	26	380P	43	590L	89	709FR	78	Helmet hood lined black	89
181B	22	403P	51	592P	89	712UP	82		
191B	22	406P	69	593B	89	713FR	79		
192PB	22	408P	42	594P	89	714FR	78		
194P	23	410P	68	596A	88	715FR	78		

## L.BRADOR IPHONE APP.

<http://itunes.apple.com/se/app/l-brador-workwear/>





# SIZE GUIDE

MEN'S	Size	C 44	C 46	C 48	C 50	C 52	C 54	C 56	C 58	C 60	C 62	C 64	C 66	C 68
C-figure: normal waist	A Chest measurement cm	88	92	96	100	104	108	112	116	120	124	128	132	136
	B Waist measurement cm	76	80	84	88	92	97	102	108	114	120	126	132	138
	C Hip measurement cm	94	98	102	106	110	114	118	122	126	130	134	138	142
	D Inseam measurement cm	80	80	82	82	82	82	84	84	84	84	84	84	84
	Inches W (Waist)	30	31	33	35	36	38	40	42	45	46	48		
	Inches L (Length)	31	31	32	32	32	33	33	33	33	34	35		

MEN'S	Size *	C 146	C 148	C 150	C 152	C 154	C 156
C-figure, long; normal waist	A Chest measurement cm	92	96	100	104	108	112
	B Waist measurement cm	80	84	88	92	97	102
	C Hip measurement cm	98	102	106	110	114	118
	D Inseam measurement cm	85	87	87	87	87	89
	Inches W (Waist)	31	33	35	36	38	40
	Inches L (Length)	34	34	34	35	35	35

MEN'S	Size **	D 96	D 100	D 104	D 108	D 112	D 116
D-figure: large waist	A Chest measurement cm	96	100	104	108	112	116
	B Waist measurement cm	90	94	98	103	108	114
	C Hip measurement cm	104	108	112	116	120	124
	D Inseam measurement cm	78	78	78	78	80	80
	Inches W (Waist)	35	37	39	41	42	45
	Inches L (Length)	30	31	31	32	32	32

\* C150 = C50 with increased leg length

\*\* D100 = C50 with increased waist measurement and reduced leg length

WOMEN'S	Size	C 36	C 38	C 40	C 42	C 44
C-figure: normal hips	A Chest measurement cm	84	88	92	96	100
	B Waist measurement cm	69	72	76	80	84
	C Hip measurement cm	93	96	99	102	106
	D Inseam measurement cm	80	80	80	80	80
	Inches W (Waist)	28	29	31	33	35
	Inches L (Length)	31	31	31	31	31

## SIZE KEY UNISEX GARMENTS

Size	Women's	Men's	Shirts Neck size in cm	Hats Head size in cm
XS	36 – 38	44	35 – 36	53 – 54
S	40 – 42	46	37 – 38	55 – 56
M	44	48 – 50	39 – 40	57 – 58
L		52 – 54	41 – 42	59 – 60
XL		56	43 – 44	61 – 62
XXL		58 – 60	45 – 46	63 – 64
XXXL		62 – 64		

## SIZE KEY WOMEN'S GARMENTS

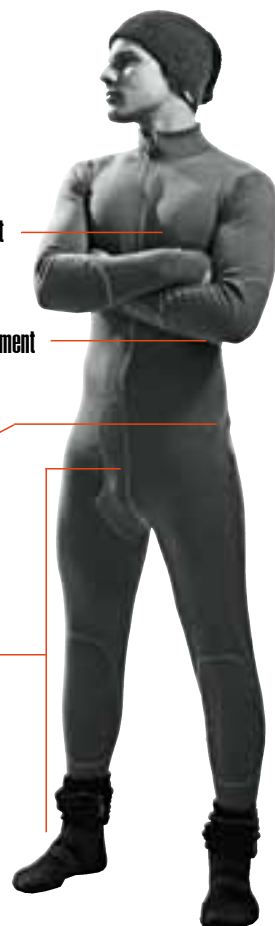
Size	Women's
S	36
M	38
L	40
XL	42
XXL	44

A Chest measurement

B Waist measurement

C Hip measurement

D Inseam measurement



---

# Material and function guide

---

## SOFTSHELL

Softshell is a concept for a wind and water-repellent material. As the name suggests, the garment is soft and comfortable with great mobility and optimal comfort. A soft shell garment usually consists of three layers: an outer shell, membrane, and lining which are laminated together. The outer shell is water-repellent, the intermediate layer is windproof and breathable and the inner layer is in micro fleece, soft and moisture wicking. You could say that Soft shell is the layer-on-layer principle in a single garment. As a famous egg firm but not. 3 in 1.

A soft shell garment is usually three layers. Outer shell, membrane, and lining which are laminated together.

## Merino wool - a unique natural material.

L.Brador's undergarments are made from ecological wool from the Merino sheep that live wild in Australia and New Zealand. Wool is a unique material with properties that no other fibre has. It is soft and comfortable to have next to the skin. It's a protein-based fibre and therefore has a greater resistance to fire than petroleum-fibres. Wool is an excellent insulator thanks to millions of small air pockets in the fibres. It is naturally anti-bacterial, neutralises sweat odour and 'breathes'. Wool warms just as well in a wet condition.



Wool doesn't melt on contact with heat. Because it is Superwash-treated it can be washed at 40°C without any problem. Wool is probably one of the world's best materials.

---

## Please do not rinse.

In the case of functional materials such as GoreTex and other similar membranes, EPIC, fleece and all the moisture-wicking garments such as undergarments and functional T-shirts, you should not use a fabric softener! It destroys moisture wicking by clogging the channels. It changes the material's properties and besides it's not very kind to the environment.



---

## *Microporous or Hydrophilic*



## MEMBRANE

A membrane is used in garments to keep out moisture and wick away moisture. There are two different kinds. MICROPOROUS or HYDROPHILIC Microporous has small holes in the whole of the plastic film in which moisture passes as vapour. The holes are so small that water cannot enter from the outside.

Hydrophilic means a molecular structure which causes moisture to be drawn through/absorbed by the membrane and transported on. The advantage of a hydrophilic membrane is there is no risk of the pores clogging, which may be the case when a microporous membrane is used.

# FLEECE ALWAYS WORKS



Virtually everyone knows about fleece, but it's not really an original material, more a manufacturing technique. Fleece is a knitted material, which is heavily brushed on one or both sides to create a smooth and dense pile. Originally fleece was always 100% Polyester, but today, a fleece can also contain cotton or other materials. The brushed surface gives greater comfort and also promotes moisture transport. Therefore, e.g. 723P is a perfect 2-layer garment that is perceived as warmer thanks to the napped surface wicks away moisture and binds more insulating air.

*Trivia about Fleece: Fleece was first produced in the USA in the late 80's, initially of 100% polyester. Fleece is originally an old English word for the sheep's pelt or coat.*



## WHAT MATERIAL SHOULD MY WORK TROUSERS BE IN?

Each to his own taste - divided.

Of course you must choose trousers that you are comfortable in, but a small guide just to know the difference between our materials may be useful:

**POLYESTER** is a synthetic material that holds colour and shape well and is frequently more hardwearing.

**COTTON** is a strong natural fibre with nice feeling and good wear resistance. Comfortable, cool and soft against the skin. A cotton fabric with a weight of around 370-380 g/m<sup>2</sup> gives the correct garment weight, with no loss of movement and feeling when you work. After a few washes, you have a very comfortable garment to work in. 100% cotton gives a heat-resistant garment that will not melt.

**POLYESTER/COTTON** in combination gives a garment with cotton's comfort and softness and polyester's wear resistance. How the different materials are combined depends on what benefits you wish to give the garment you are creating.

**COTTON/EPIC** is a technology based on encapsulating the cotton fibre in the fabric into a water-repellent layer before weaving the fabric. The fibre then expands and protection against rain is created, while maintaining breathability.

## CORDURA TOLERATES ROUGH TREATMENT

Cordura is used as an outer shell on work clothes to enhance tear strength and wearing qualities. Usually used on exposed areas such as reinforcement at the bottom of the trousers' rear, elbows or shoulders, and of course on the work trousers' kneepads.



## SHELL AGAINST THE RAIN

Our shell garments have a water-repellent finish so that water is not sucked into the outer fabric. This together with the membrane and taped seams makes the garment waterproof. Suitable when you have a high level of activity as it breathes and releases body heat. If you want to jump into a water bath and lie and splash in puddles, then a completely tight garment is needed that does not breathe in order not to absorb the water. For that, we have PU garments. Best suitable when you do not have such a high level of activity.



## UV PROTECTION IN GARMENTS

In-built sun protection and ventilation in your new shirt is neither Science Fiction nor Hocus Pocus. Development goes forward and we really want you to take advantage of it to improve your lot at work. The sun is wonderful, but it also has its drawbacks. Getting burned increases the risk for skin cancer, and the longer you're in the sun, the greater the risk. If you work outdoors a lot it might be a good idea to use clothing that is UV-protected. Heat is the next difficult thing. We ensure that our T-shirts and pique shirts in the functional range have maximum wicking, and the lightweight, breathable material at the same time feels comfortable against the skin. All of a sudden it's fun to be in the sun again!





Skydda PPE AB, SE-523 85 Ulricehamn.  
Phone +46 (0)321-67 73 00, [www.skydda.com](http://www.skydda.com)



**L.BRADOR®**

[www.lbrador.com](http://www.lbrador.com)